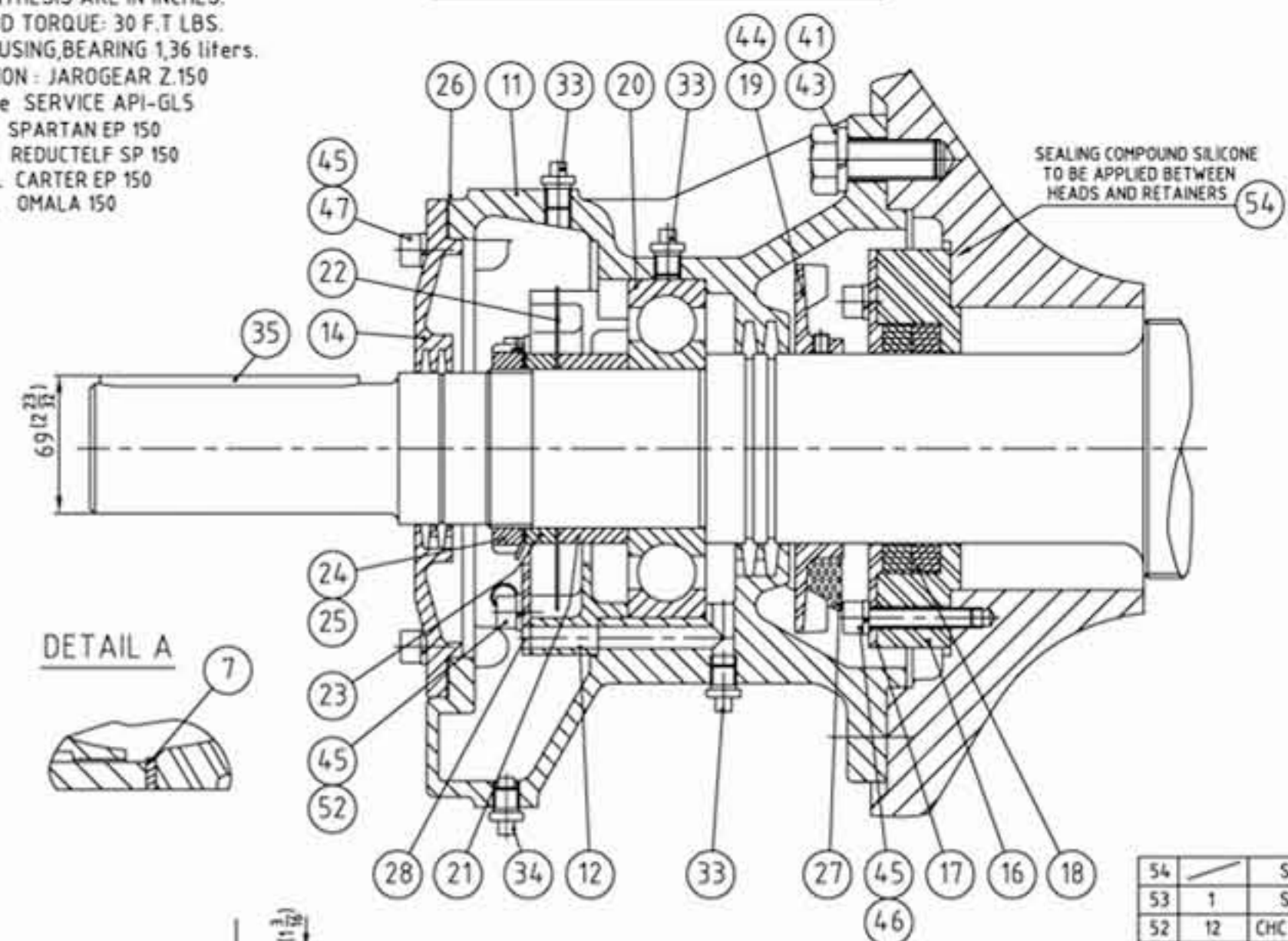


NOTES:
 -DIMENSIONS IN PARENTHESIS ARE IN INCHES.
 -RECOMMENDED TIE ROD TORQUE: 30 F.T LBS.
 -OIL QUANTITY BY HOUSING BEARING: 1,36 liters.
 -USED OIL SPECIFICATION: JAROGEAR Z.150
 Extreme oil pressure SERVICE API-GL5
 EQUIVALENT: ESSO SPARTAN EP 150
 ELF REDUCTELF SP 150
 TOTAL CARTER EP 150
 SHELL OMALA 150

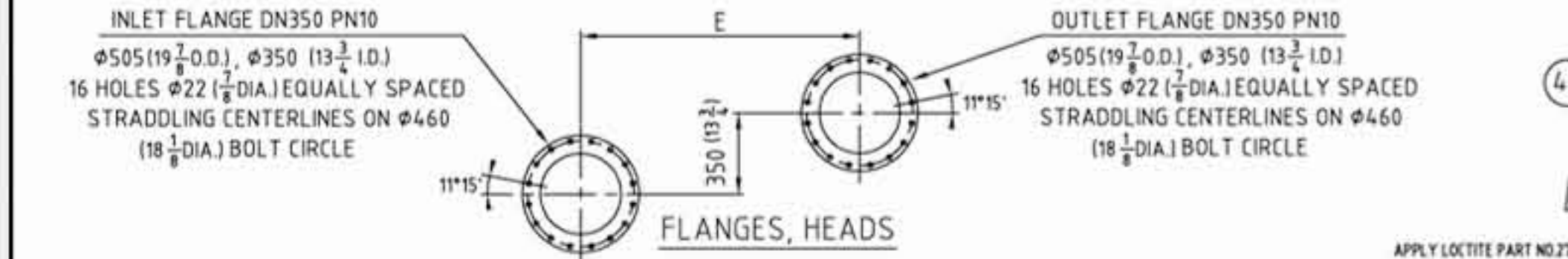
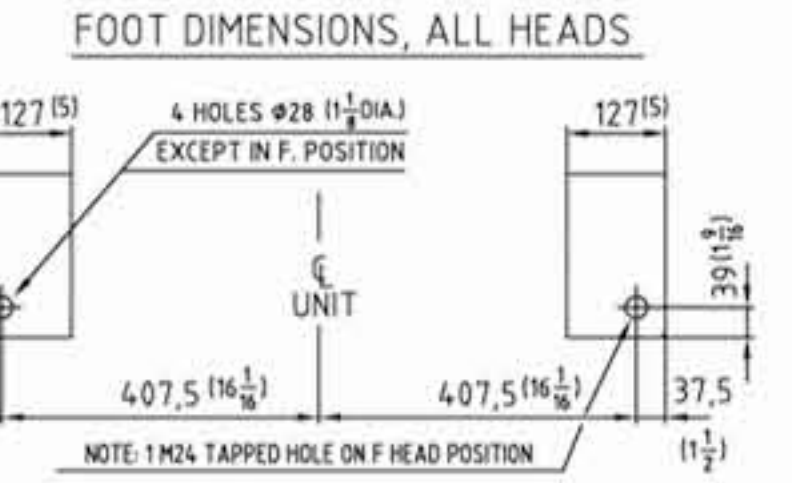
INLET BEARING HOUSING DETAIL



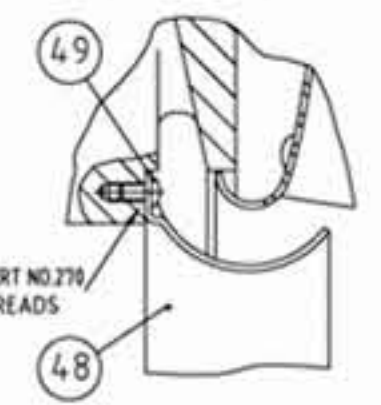
REV	DATE	E.D.N	BY	REVISIONS
0	17/09/2003		BD	ORIGINAL
1	14/04/2004		TF	CANCEL FLANGES

Chart II IMPELLERS TYPE (ITEM 4)

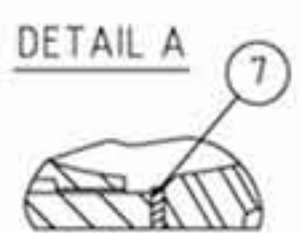
QTY.	PART NO.	IMPELLER TYPE	DWG.	WEIGHT: kg
	S.5814	N°7301/7304	251-04	9,7
	S.5815	N°7302/7305	251-09	9,7
	S.5816	N°7303/7306	251-10	10,6
	S.5824	N°7311/7313	251-29	9,7
	S.5818	N°7312/7314	251-28	10



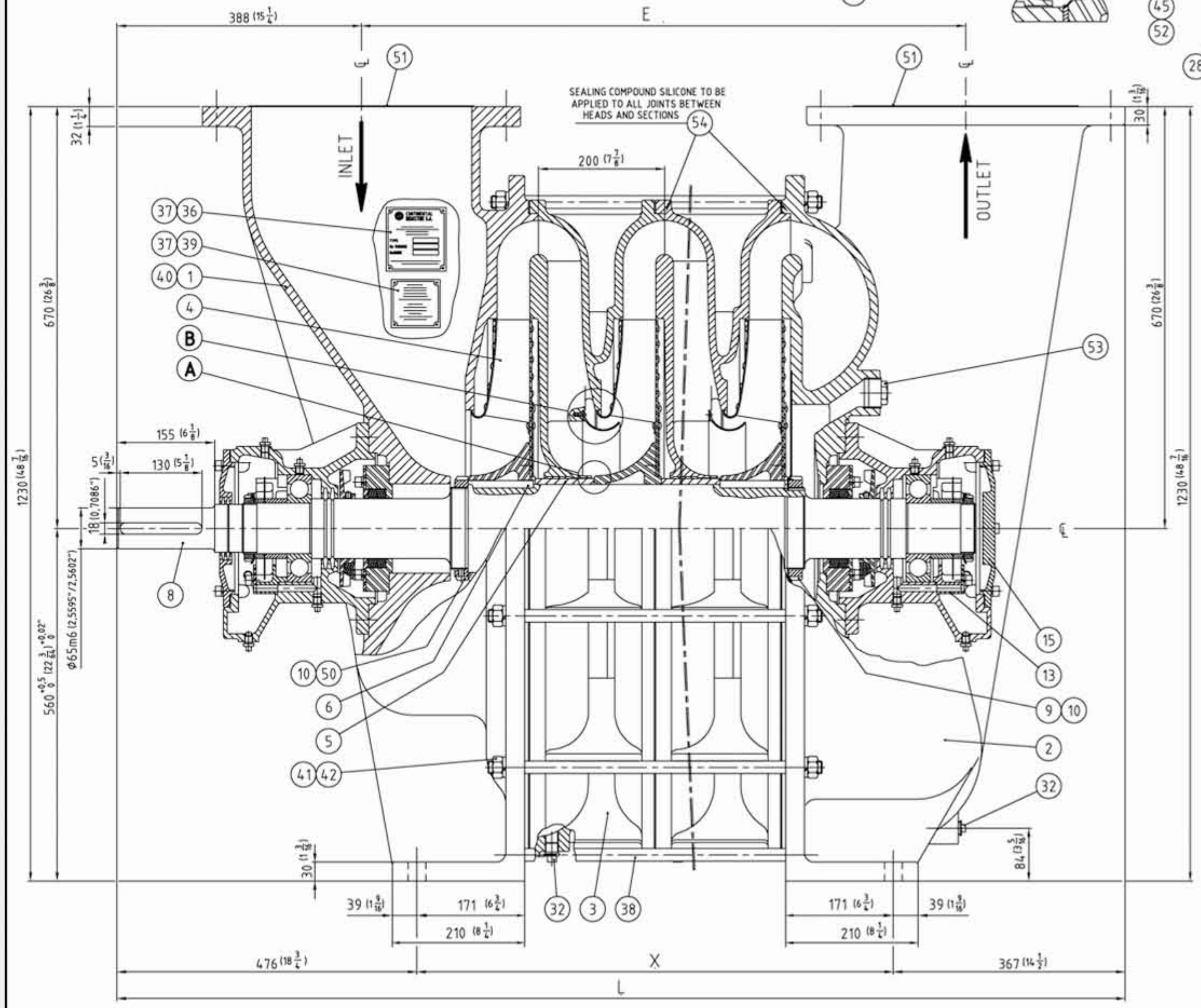
DETAIL B



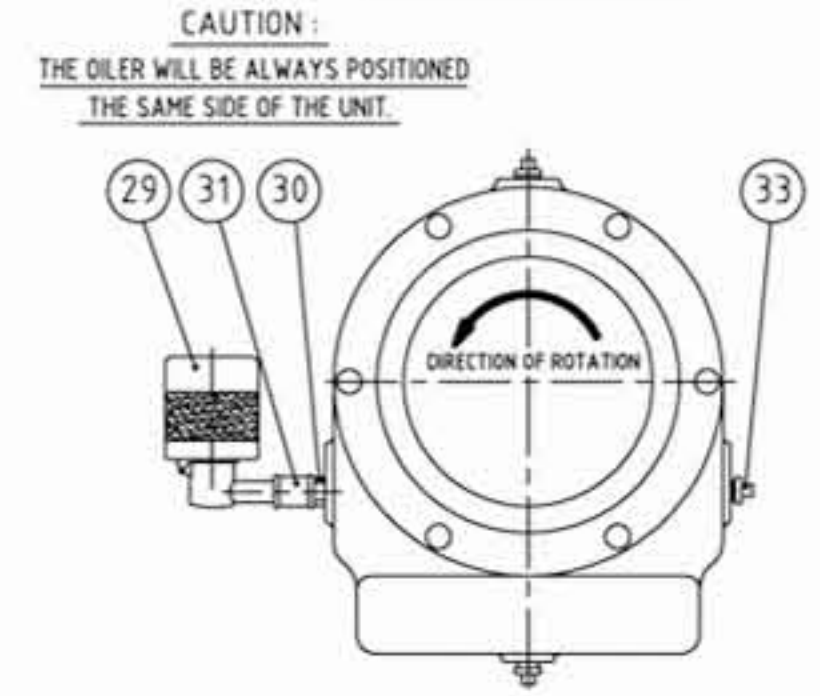
DETAIL A



APPLY LOCTITE PART NO.270 TO SCREW THREADS



OILER POSITION



54	1	S.2523	SILICONE JOINT			
53	1	S.6027	PLUG, 1 1/2 GAS			
52	12	CHC M10-050	SCREW, CHC M10-50			
51	2	S.1428	COVER, PORT / DN350	050	C.STEEL	1
50	1	AHC M08-16J	SCREW, AHC M8-16		S.STEEL	
49	See chart I	GS M06-010J	SCREW, GS M6-10		S.STEEL	
48	See chart I	S.5827	BAFFLE, INTERMEDIATE SECTION	251-65	S.STEEL	1
47	12	CHC M10-025	SCREW, CHC M10-25			
46	12	CHC M10-055	SCREW, CHC M10-55			
45	36	W10	WASHER LOCK, W10			
44	4	AHC M08-010.PL	SCREW, AHC M8-10.PL			
43	16	H M20-040	SCREW, H M20-40			0,16
42	24	H M20	NUT, H20			
41	40	W20	WASHER LOCK, W20			
40	1	S.1802	VALVE WARNING PLATE	008		
39	1	S.1801	SURGE WARNING PLATE	092	ALUMINIUM	
38	12	See chart I	TIE ROD	010	C.STEEL	See chart I
37	8	CT02.89-008	RIVET, Ø2,89-8		C.STEEL	
36	1	S.0216	NAME PLATE	284	ALUMINIUM	
35	1	S.6026	KEY, COUPLING 18x11x130	003	C.STEEL	0,2
34	2	S.2581	PLUG, 1/4 GAS MAGNETIC			
33	8	S.0200	PLUG, 1/4 GAS			
32	See chart I	S.1427	PLUG, 1/2 GAS			
31	2	S.2580	NIPPLE, FF 1/4 GAS			
30	2	S.2579	NIPPLE, MM 1/4 GAS			
29	2	S.1423	OILER 1/4 GAS			0,4
28	2	S.6037	CAP, OIL RESERVOIR	400-26	ALUMINIUM	
27	4	S.6043	FAN GUARD, BEARING HOUSING	400-39	C.STEEL	0,1
26	2	S.1417	GASKET, BEARING CAP	250-16		
25	2	S.1422	NUT, KM16			0,4
24	2	S.1421	WASHER, MB16			
23	2	S.1411	SPACER, SHORT	250-14	C.STEEL	
22	2	S.5833	OIL SLINGER	251-13	C.STEEL	
21	2	S.1412	SPACER, LONG	250-14	C.STEEL	
20	2	S.5807	BEARING, BALL 6316 C3			3,7
19	2	S.1410	FAN, COOLING	75-12	ALUMINIUM	0,3
18	4	S.1426	GRAPHIT RING			
17	2	S.1409	ADAPTER, GRAPHIT RING	250-12	ALUMINIUM	0,3
16	2	S.1408	RETAINER, GRAPHIT RING	250-12	ALUMINIUM	2
15	1	S.1404	CLOSED CAP, HOUSING BEARING	250-10	CAST IRON	4
14	1	S.1405	OPEN CAP, HOUSING BEARING	250-09	CAST IRON	3,2
13	1	S.6036	OIL RESERVOIR, OUTLET END	400-25	CAST IRON	1,8
12	1	S.6035	OIL RESERVOIR, INLET END	400-24	CAST IRON	2
11	2	S.5810	HOUSING, BEARING	400-07	CAST IRON	30
10	2	S.5830	NUT, KM26			0,9
9	1	S.5829	WASHER, MB26			
8	1	See chart I	SHAFT	400-11	C.STEEL	See chart I
7	Variable	S.5808	SHIM, IMPELLER	006	C.STEEL	
6	See chart I	S.6008	KEY, IMPELLER 14x12x104	003	C.STEEL	0,14
5	See chart I	S.5806	SPACER, IMPELLER	251-12	C.STEEL	3,15
4	See chart I	See chart II	IMPELLER	See chart II	ALUMINIUM	See chart II
3	See chart I	S.5803	SECTION, INTERMEDIATE	251-03	CAST IRON	250
2	1	S.5802	HEAD, OUTLET	251-02	CAST IRON	415
1	1	S.5801	HEAD, INLET	251-01	CAST IRON	330

Chart I

TYPE	251.01	251.02	251.03	251.04
PART NO. ITEM 8	S.6011	S.6012	S.6013	S.6014
WEIGHT:kg, ITEM 8	54	78	102	126
PART NO. ITEM 38	S.1448	S.1449	S.1450	S.1451
WEIGHT:kg, ITEM 38	0,3	0,8	1,3	1,8

QTY.	ITEM 3	ITEM 4	ITEM 5	ITEM 6	ITEM 32	ITEM 48	ITEM 49
	0	1	2	3	1	0	0
	1	2	3	4	2	1	7
	0	1	2	3	3	2	14
	1	2	3	4	3	3	21

DIMENSION E	559 (22)	759 (29 7/8)	959 (37 3/4)	1159 (45 5/8)
DIMENSION X	356 (14)	556 (21 7/8)	756 (29 3/4)	956 (37 5/8)
DIMENSION L	1200 (47 1/4)	1400 (55 1/8)	1600 (63)	1800 (70 7/8)
WEIGHT: kg	924	1224	1524	1824
WEIGHT: LBS	2036	2698	3359	4020

CONTINENTAL INDUSTRIE S.A
 TYPE 251A RT
 INLET END DRIVE

SECTIONAL DRAWING 1 THRU 4 STAGES
 GRAPHIT RING SEAL

DATE: 17/09/2003
 SCALE: A1
 DWG No. 251A-AG1A
 REV 1

This drawing is our property and cannot be copied or communicated to third without our authorization.