

NOTES:  
 -DIMENSIONS IN PARENTHESIS ARE IN INCHES.  
 -RECOMMENDED TIE ROD TORQUE: 30 F.T LBS.  
 -OIL QUANTITY BY HOUSING BEARING: 1.36 liters.  
 -USED OIL SPECIFICATION: JAROGEAR Z.150  
 Extreme oil pressure SERVICE API-GL5  
 EQUIVALENT: ESSO SPARTAN EP 150  
 ELF REDUCTELF SP 150  
 TOTAL CARTER EP 150  
 SHELL OMALA 150

INLET BEARING HOUSING DETAIL

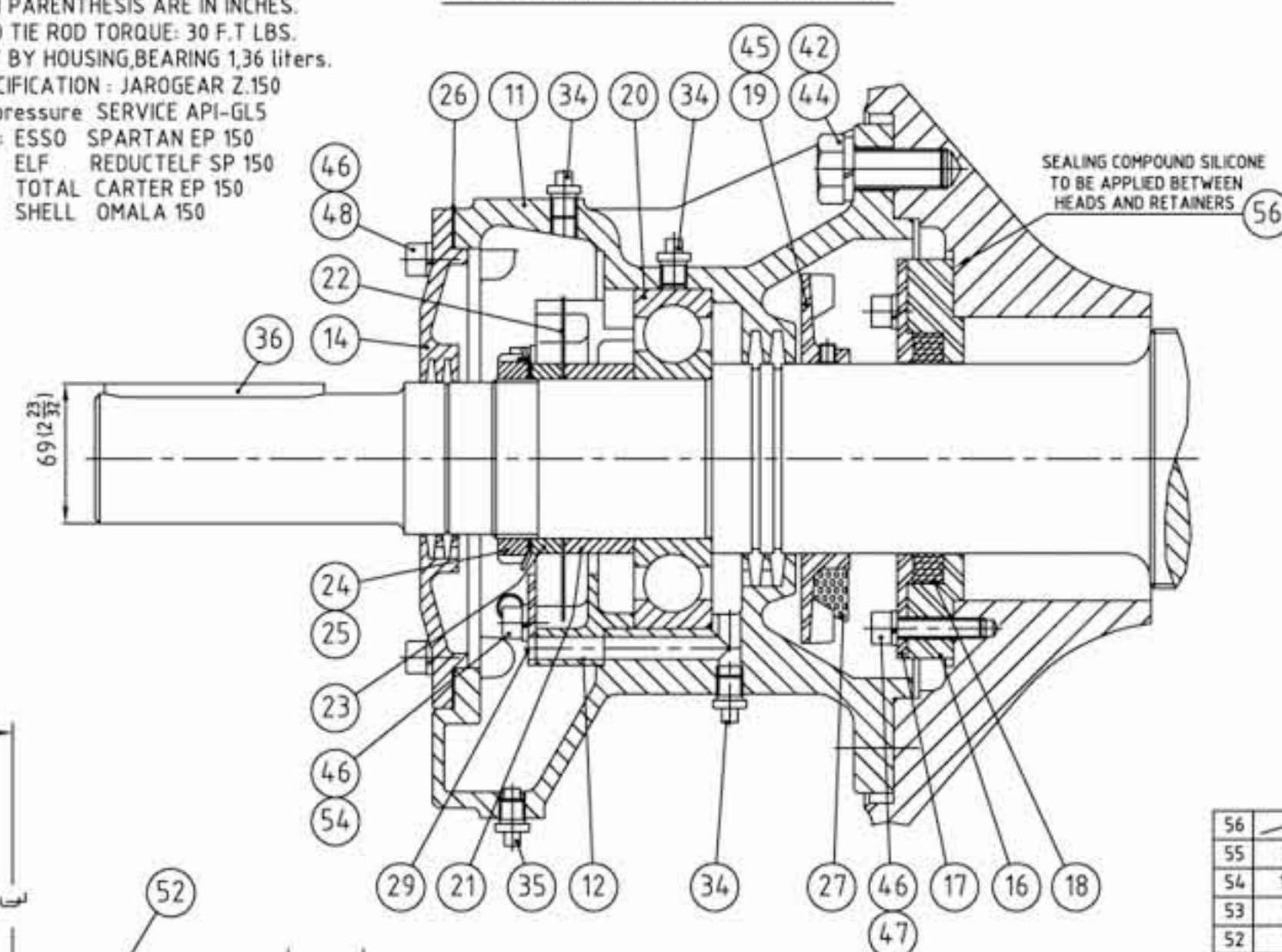
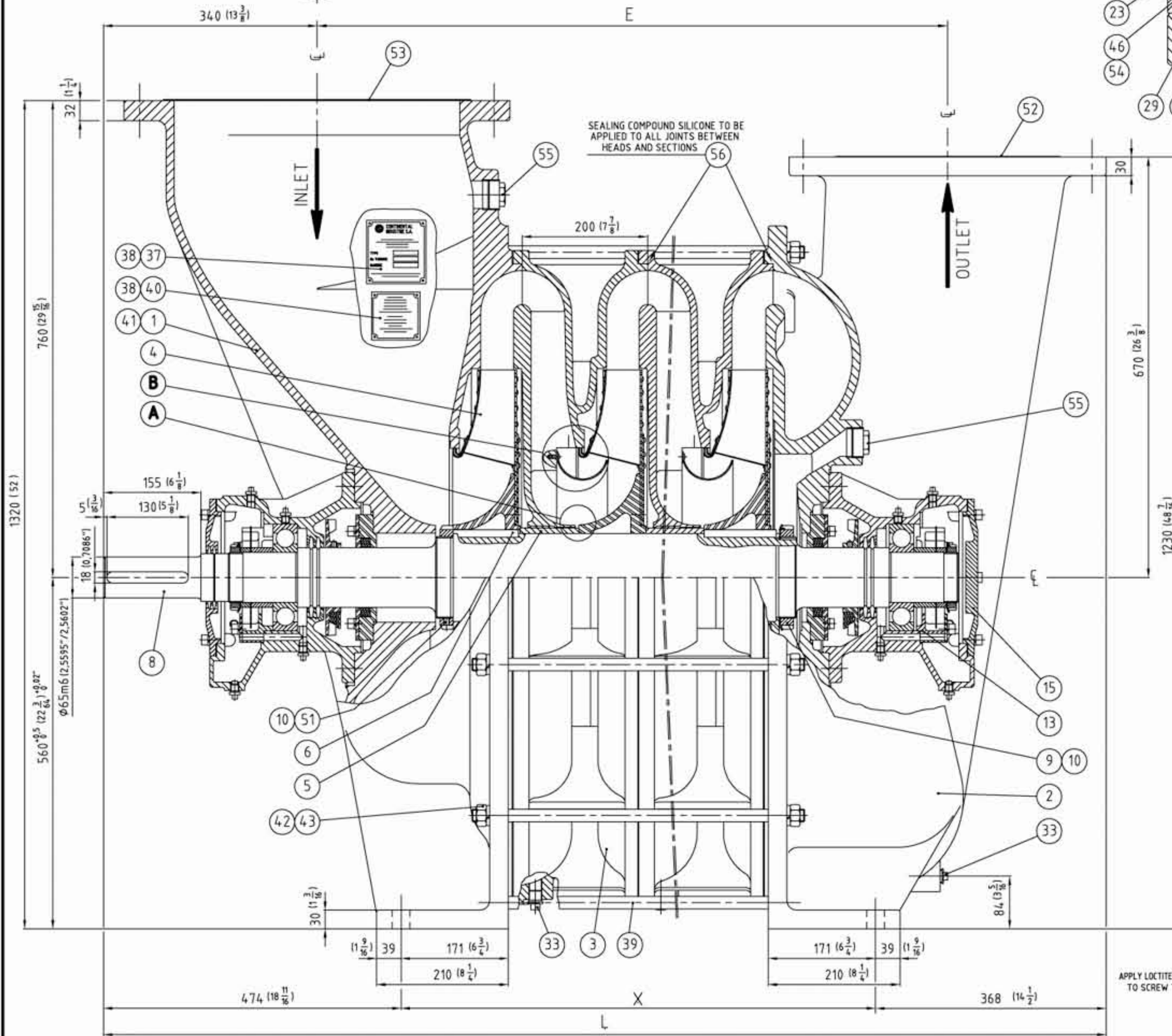
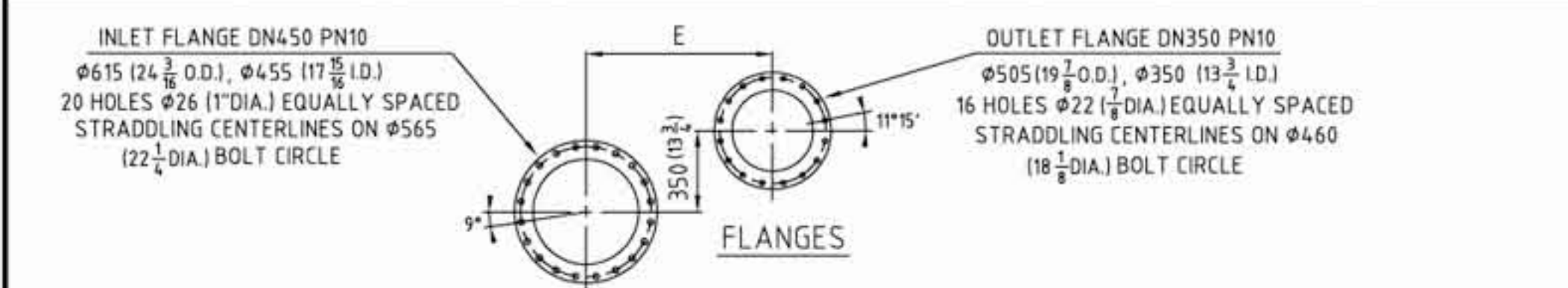
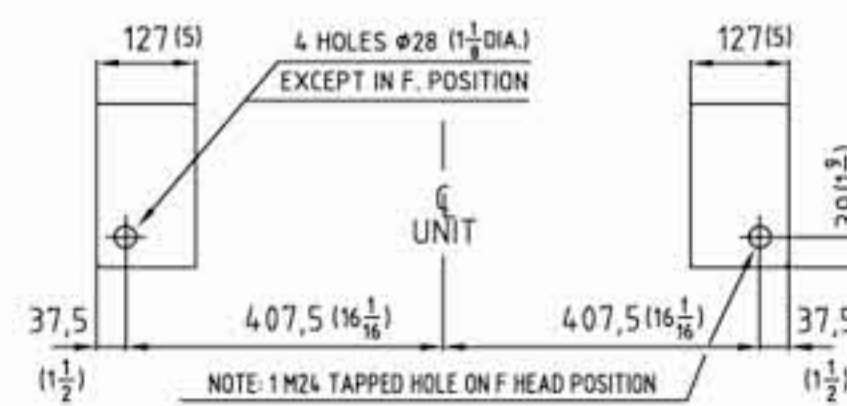


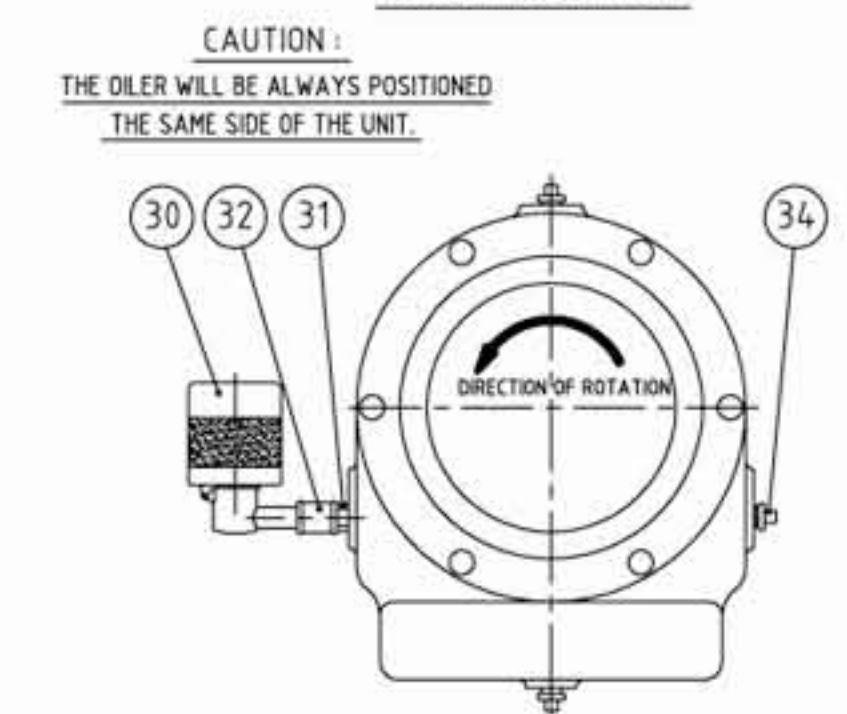
Chart II		IMPELLERS TYPE (ITEM 4)	
QTY.	PART NO.	IMPELLER TYPE	DWG. WEIGHT: kg
	S.6004	N°8301 BC	400-04 12,7
	S.6005	N°8302 BC	400-05 12,3
	S.6006	N°8311 R	400-06 12,3
	S.6007	N°8312 R	400-09 12,3



FOOT DIMENSIONS, ALL HEADS



OILER POSITION



DETAIL A



DETAIL B

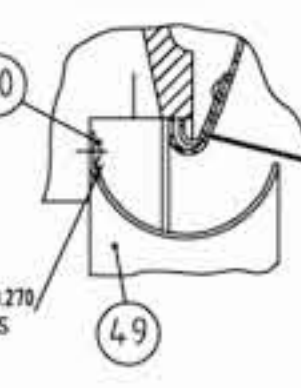


Chart I	TYPE	400.01	400.02	400.03	400.04
PART NO. ITEM 8	S.6011	S.6012	S.6013	S.6014	
WEIGHT: kg, ITEM 8	54	78	102	126	
PART NO. ITEM 39	S.1448	S.1449	S.1450	S.1451	
WEIGHT: kg, ITEM 39	0,3	0,8	1,3	1,8	
QTY.	ITEM 3	0	1	2	3
	ITEM 4	1	2	3	4
	ITEM 5	0	1	2	3
	ITEM 6	1	2	3	4
	ITEM 33	1	2	3	4
	ITEM 49	0	1	2	3
	ITEM 50	0	7	14	21
DIMENSION E	605 (23 7/8)	805 (31 3/8)	1005 (39 5/8)	1205 (47 7/8)	
DIMENSION X	356 (14)	556 (21 7/8)	756 (29 3/4)	956 (37 5/8)	
DIMENSION L	1198 (47 1/8)	1398 (55 1/4)	1598 (62 9/16)	1798 (70 3/8)	
WEIGHT: kg	953	1253	1553	1853	
WEIGHT: LBS	2100	2762	3423	4084	

ITEM	QTY.	PART NO.	DESCRIPTION	DWG.	MATERIAL	WEIGHT kg
56	1	S.2523	SILICONE JOINT			
55	2	S.6027	PLUG PIPE, 1/2 GAS			
54	12	CHC M10-050	SCREW, CHC M10-50			
53	1	S.6498	COVER, PORT / DN450	050	C.STEEL	2,3
52	1	S.1428	COVER, PORT / DN350	050	C.STEEL	1
51	1	AHC M08-16.1	SCREW, AHC M8-16		S.STEEL	
50	See chart I	GS M06-010.1	SCREW, GS M6-10		S.STEEL	
49	See chart I	S.6076	BAFFLE	400-154	S.STEEL	1,9
48	12	CHC M10-025	SCREW, CHC M10-25			
47	12	CHC M10-045	SCREW, CHC M10-45			
46	36	W10	WASHER LOCK, W10			
45	4	AHC M08-010.PL	SCREW, AHC M8-10.PL			
44	16	H M20-040	SCREW, H M20-40			0,14
43	22	H M20	NUT, H20			
42	38	W20	WASHER LOCK, W20			
41	1	S.1802	VALVE WARNING PLATE	008		
40	1	S.1801	SURGE WARNING PLATE	092	ALUMINIUM	
39	12	See chart I	TIE ROD	010	C.STEEL	See chart I
38	8	CT02.89-008	RIVET, Ø2,89-8		C.STEEL	
37	1	S.0216	NAME PLATE	284	ALUMINIUM	
36	1	S.6026	KEY, COUPLING 18x11x130	003	C.STEEL	0,2
35	2	S.2581	PLUG PIPE, 1/4 GAS MAGNETIC			
34	8	S.0200	PLUG PIPE, 1/4 GAS			
33	See chart I	S.1427	PLUG PIPE, 1/2 GAS			
32	2	S.2580	NIPPLE, FF 1/4 GAS			
31	2	S.2579	NIPPLE, MM 1/4 GAS			
30	2	S.1423	OILER 1/4 GAS			0,4
29	2	S.6037	CAP, OIL RESERVOIR	400-26	C.STEEL	
28						
27	4	S.6043	FAN GUARD, BEARING HOUSING	400-39	C.STEEL	0,1
26	2	S.1417	GASKET, BEARING CAP	250-16		
25	2	S.1422	NUT, KM16			0,4
24	2	S.1421	WASHER, MB16			
23	2	S.1411	SPACER, SHORT	250-14	C.STEEL	0,17
22	2	S.5833	OIL SLINGER	251-13	C.STEEL	0,15
21	2	S.1412	SPACER, LONG	250-14	C.STEEL	0,6
20	2	S.5807	BEARING, BALL 6316 C3			3,7
19	2	S.1410	FAN, COOLING	75-12	ALUMINIUM	0,3
18	2	S.1426	GRAPHIT RING			
17	2	S.1409	ADAPTER, GRAPHIT RING	250-12	ALUMINIUM	1
16	2	S.1408	RETAINER, GRAPHIT RING	250-12	ALUMINIUM	1,46
15	1	S.1404	CLOSED CAP, HOUSING BEARING	250-10	CAST IRON	4
14	1	S.1405	OPEN CAP, HOUSING BEARING	250-09	CAST IRON	3,2
13	1	S.6036	OIL RESERVOIR, OUTLET END	400-25	CAST IRON	1,8
12	1	S.6035	OIL RESERVOIR, INLET END	400-24	CAST IRON	2
11	2	S.5810	HOUSING, BEARING	400-07	CAST IRON	30
10	2	S.5830	NUT, KM26			0,9
9	1	S.5829	WASHER, MB26			
8	1	See chart I	SHAFT	400-11	C.STEEL	See chart I
7	Variable	S.5808	SHIM, IMPELLER	006	C.STEEL	
6	See chart I	S.6008	KEY, IMPELLER 14x12x104	003	C.STEEL	1,4
5	See chart I	S.5806	SPACER, IMPELLER	251-12	C.STEEL	3,15
4	See chart I	See chart II	IMPELLER	See chart II	ALUMINIUM	See chart II
3	See chart I	S.6003	SECTION, INTERMEDIATE	400-03	CAST IRON	250
2	1	S.6002	HEAD, OUTLET	400-02	CAST IRON	415
1	1	S.6001	HEAD, INLET	400-01	CAST IRON	420

CONTINENTAL INDUSTRIE S.A. TYPE 400A INLET END DRIVE

SECTIONAL DRAWING 1 THRU 4 STAGES GRAPHIT RING SEAL

DATE: 12/09/2003

SCALE: A1

QUOTATION: DR: BD CHKD DR

ORDER No.: 19/04/2004 DWG No. 400A-AG1A

REVISIONS: 03/02/2005 REV 2