

REV	DATE	EDN	BY	REVISIONS
8	08/19/08		BD	ORIGINAL

NOTES: -DIMENSIONS IN PARENTHESIS ARE IN INCHES.
 -RECOMMENDED TIE ROD TORQUE : 30 F.T. LBS.
 -USED GREASE SPECIFICATIONS : HP-ST3
 EQUIVALENT: ESSO: BEACON 3
 ELF: ROLEXA 3
 TOTAL: MULTIS TIR
 SHELL: ALVANIA EP3
 MOBIL: MOBILUX EP3

NOTE: -TYPE 051A.08 RT: ROTATION SPEED < 3000 RPM.
 -FOR ROTATION SPEED > 3000 RPM, SEE DRAWING 51A-AG2F et 51A-AG3F.

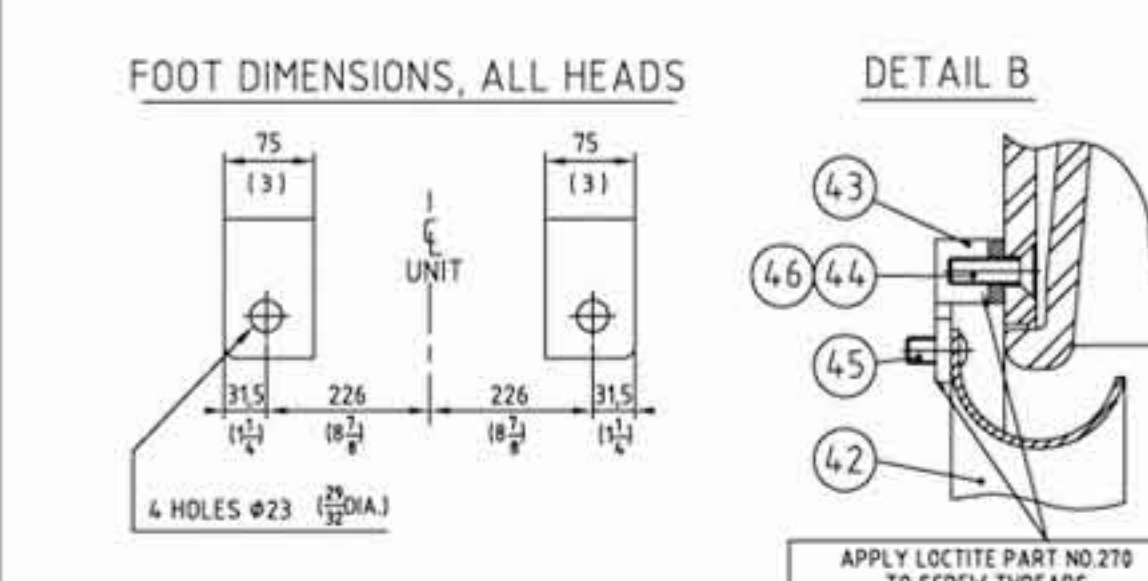
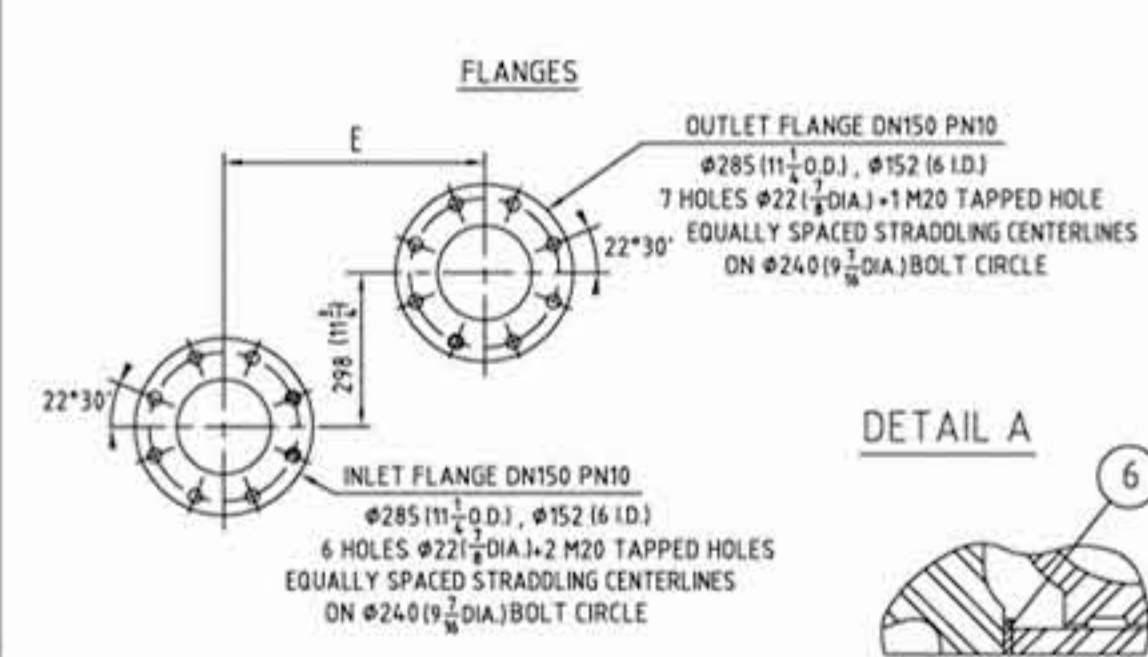
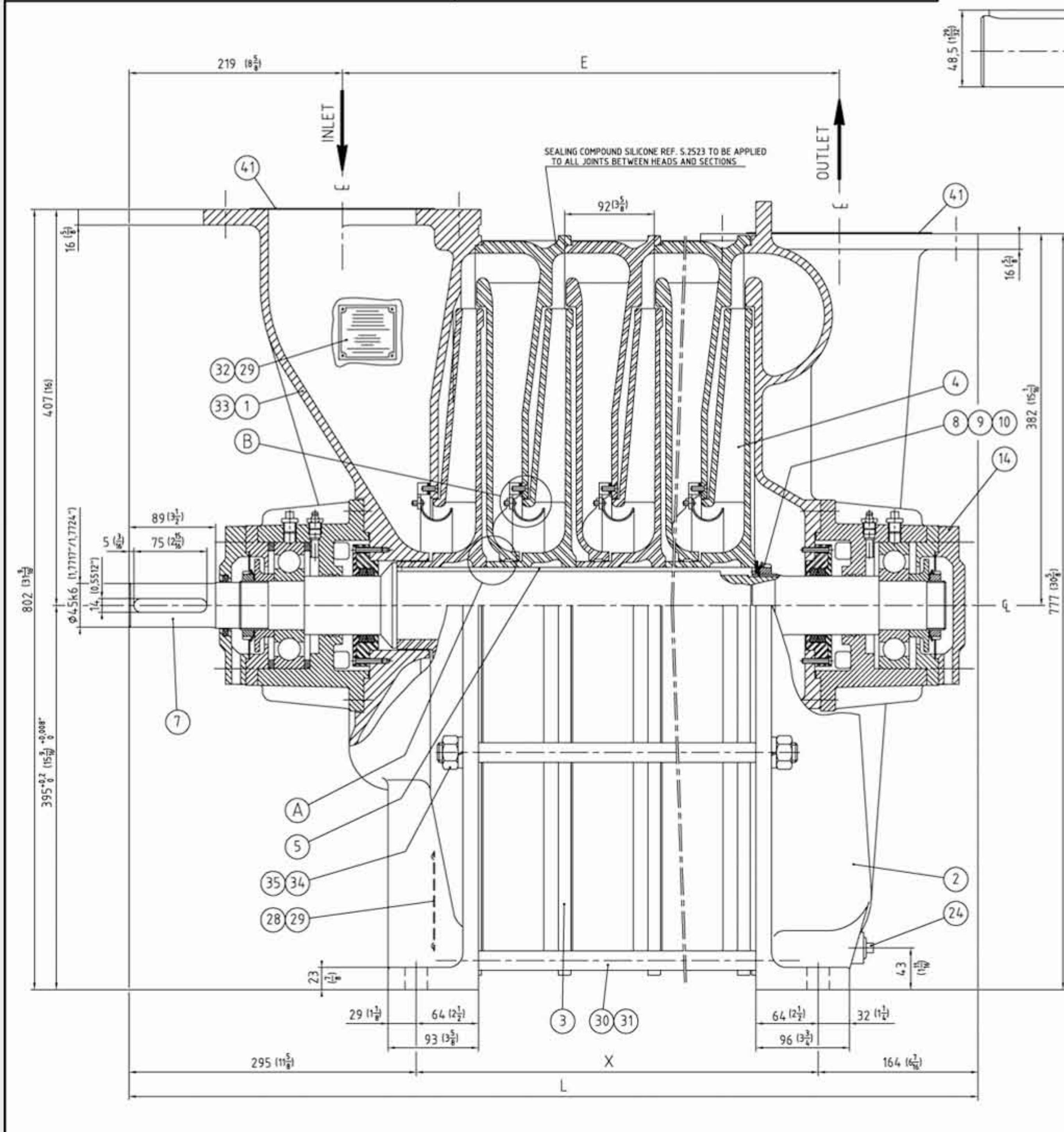


Chart I	TYPE	051A.01	051A.02	051A.03	051A.04	051A.05	051A.06	051A.07	051A.08
PART NO. ITEM 5	S.0827	S.0828	S.0829	S.0830	S.0831	S.0832	S.0833	S.4910	
PART NO. ITEM 7	S.5024/1	S.5024/2	S.5024/3	S.5024/4	S.5024/5	S.5024/6	S.5024/7	S.5024/8	
WEIGHT: kg, ITEM 7	11.6	14.3	17.1	19.9	22.7	25.4	28.2	31	
PART NO. ITEM 30	S.1241	S.0645	S.1243	S.1247	S.0822	S.1248	S.1037	S.4911	
PART NO. ITEM 31	S.1241S	S.0645S	S.1243S	S.1247S	S.0822S	S.1248S	S.1037S	S.4911S	
QTY.	ITEM 3	0	1	2	3	4	5	6	7
	ITEM 4	1	2	3	4	5	6	7	8
	ITEM 4.2	1	2	3	4	5	6	7	8
	ITEM 4.3	4	8	12	16	20	24	28	32
	ITEM 4.4	4	8	12	16	20	24	28	32
	ITEM 4.5	4	8	12	16	20	24	28	32
DIMENSION E		234,5 (9 1/4)	326,5 (12 7/8)	418,5 (16 3/4)	510,5 (20 1/4)	602,5 (23 3/4)	694,5 (27 3/8)	786,5 (31 1/4)	878,5 (34 5/8)
DIMENSION X		137 (5 3/8)	229 (9 1/8)	321 (12 5/8)	413 (16 1/4)	505 (19 7/8)	597 (23 5/8)	689 (27 1/4)	781 (30 3/4)
DIMENSION L		596 (23 5/8)	688 (27 1/8)	780 (30 3/4)	872 (34 3/8)	964 (37 3/4)	1056 (41 3/8)	1148 (45 3/4)	1240 (48 3/4)
WEIGHT: kg		233	274	316	357	398	439	480	521
WEIGHT: LBS		514	604	696	787	877	968	1058	1148

4.6	Variable	MOS.1	WASHER, M5					S.STEEL	
4.5	See chart I	GS M05-010	SCREW, GS M5-10					S.STEEL	
4.4	See chart I	FHC M05-016	SCREW, FHC M5-16					S.STEEL	
4.3	See chart I	S.0823	BRACKET, BAFFLE			50-20		S.STEEL	
4.2	See chart I	S.0826	BAFFLE			50-12		S.STEEL	
4.1	2	S.0624	COVER, PORT			050		C.STEEL	
4.0	12	CHC M8-040	SCREW, CHC M8-40						
3.9	12	W8	WASHER LOCK, W8						
3.8	12	CHC M12-035	SCREW, CHC M12-35						
3.7	12	W12	WASHER LOCK, W12						
3.6	12	FHC M05-030	SCREW FHC M5-30						
3.5	14	H M20	NUT, H20						
3.4	14	W20	WASHER LOCK, W20						
3.3	1	S.1802	VALVE WARNING PLATE			008			
3.2	1	S.1801	SURGE WARNING PLATE			092		ALUMINIUM	
3.1	2	See chart I	TIE ROD (short)			010		C.STEEL	
3.0	6	See chart I	TIE ROD (long)			010		C.STEEL	
2.9	8	CT02.89-008	RIVET, Ø2.89-8						
2.8	1	S.0216	NAME PLATE			284		ALUMINIUM	
2.7	1	S.0613	KEY, COUPLING 14x9x7.5			003		C.STEEL	
2.6	2	S.0621	GREASER, 1/4 GAS						
2.5	2	S.0200	PLUG, 1/4 GAS						
2.4	1	S.1012	PLUG, 3/8 GAS						
2.3	1	S.0623	FELT JOINT Ø63x46x6						
2.2	2	S.0620	NUT, KM10						
2.1	2	S.0619	WASHER, MB10						
2.0	2	S.0610	GREASE SLINGER			30-20		C.STEEL	
1.9	2	S.0611	SPACER, BEARING / HOUSING BEARING			30-18		C.STEEL	
1.8	2	S.0617	BEARING, BALL 6410 C3						1,95
1.7	4	S.0862	GRAPHIT RING						GRAPHIT
1.6	2	S.0856	ADAPTER, GRAPHIT RING			50-36		ALUMINIUM	0,1
1.5	2	S.0855	RETAINER, GRAPHIT RING			50-36		ALUMINIUM	0,36
1.4	1	S.4663	CAP, BEARING-OUTLET END			31-46		CAST IRON	1,9
1.3	1	S.4664	CAP, BEARING-INLET END			31-46		CAST IRON	1,67
1.2	2	S.4665	SPACER, BEARING/CAP			31-47		CAST IRON	1,7
1.1	2	S.4668	WATER HOUSING, BEARING			31-45		CAST IRON	10
1.0	1	S.1222	NUT, KM13						
9	1	S.1221	WASHER, MB13						
8	2	S.4611	WAVY SPRING						C.STEEL
7	1	See chart I	SHAFT			51-120		C.STEEL	See chart I
6	Variable	S.0668	SHIM, IMPELLER			006		C.STEEL	
5	1	See chart I	KEY, IMPELLER			003		C.STEEL	
4	See chart I	See chart II	IMPELLER			See chart II		ALUMINIUM	9
3	See chart I	S.4903	SECTION, INTERMEDIATE			51-01		ALUMINIUM	26
2	1	S.0602	HEAD, OUTLET			30-02		CAST IRON	80
1	1	S.0801	HEAD, INLET			50-01		CAST IRON	85

Chart II IMPELLER TYPE (ITEM 4)			
QTY.	PART NO.	IMPELLER TYPE	DWG.
	S.4999	N°4202	51-89
	S.0819	N°4205	50-05
	S.5022	N°4208	51-117
	S.4904	N°4212	51-02

CONTINENTAL INDUSTRIE S.A	TYPE 051A INLET END DRIVE	ASSEMBLY: /
3 TRIVIER/MOIGNANS FRANCE	SECTIONAL DRAWING GRAPHIT RING SEAL	DATE: 04/12/2003
QUOTATION: /	DR: BD	CHKD. DR: /
REVISIONS: /		DWG No. /
Ce plan est notre propriété et ne peut être copié ou communiqué à des tiers sans notre autorisation		51A-AG1A 0