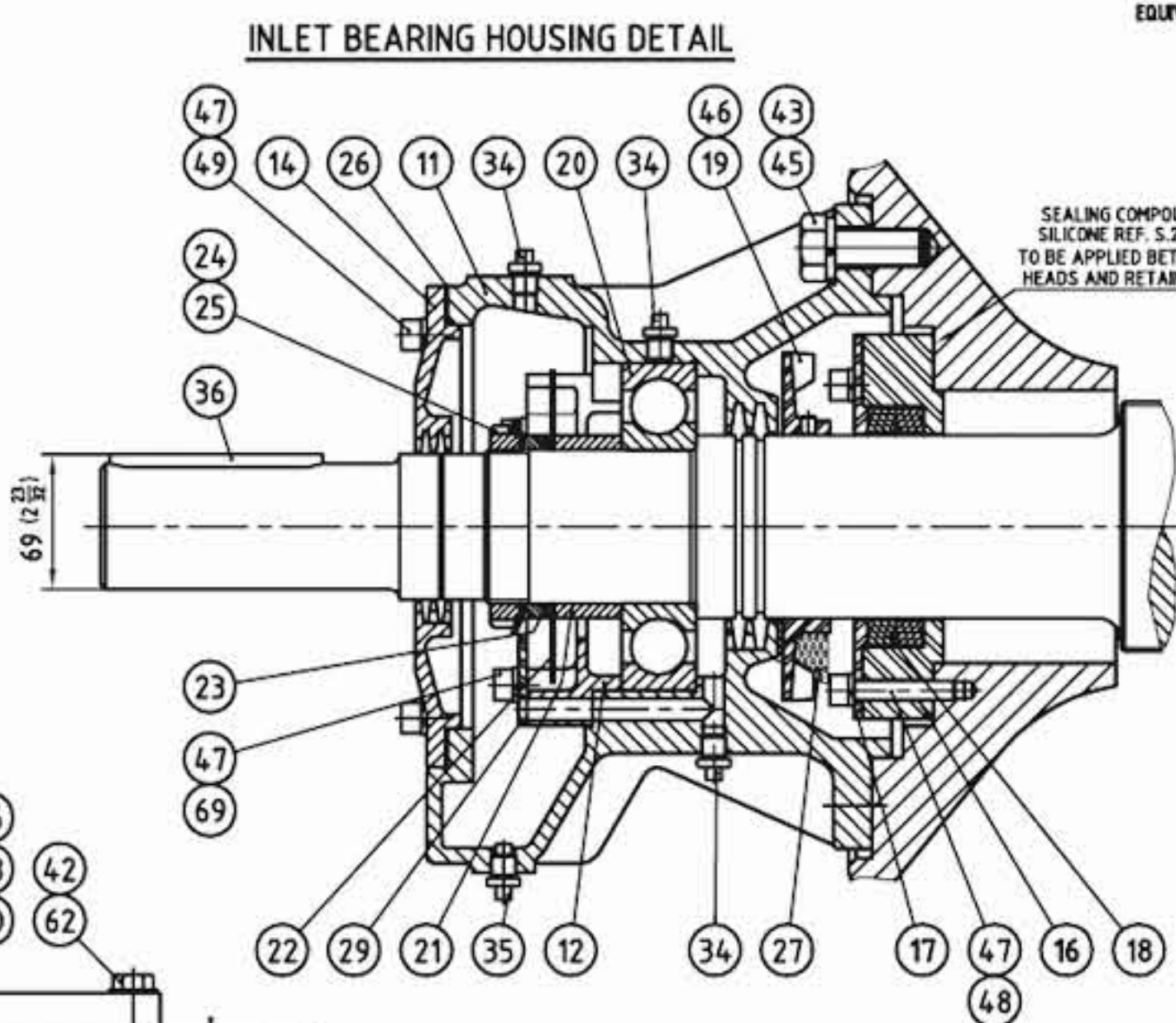
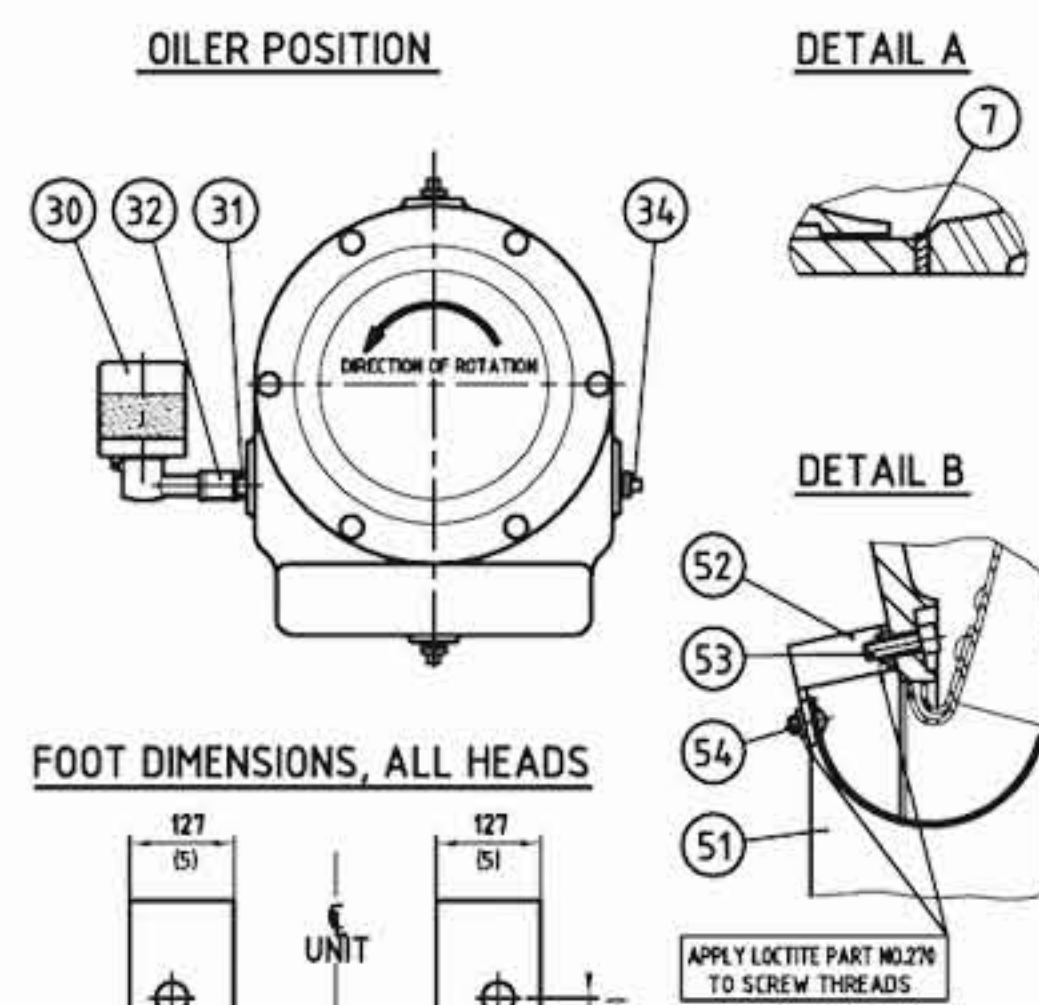
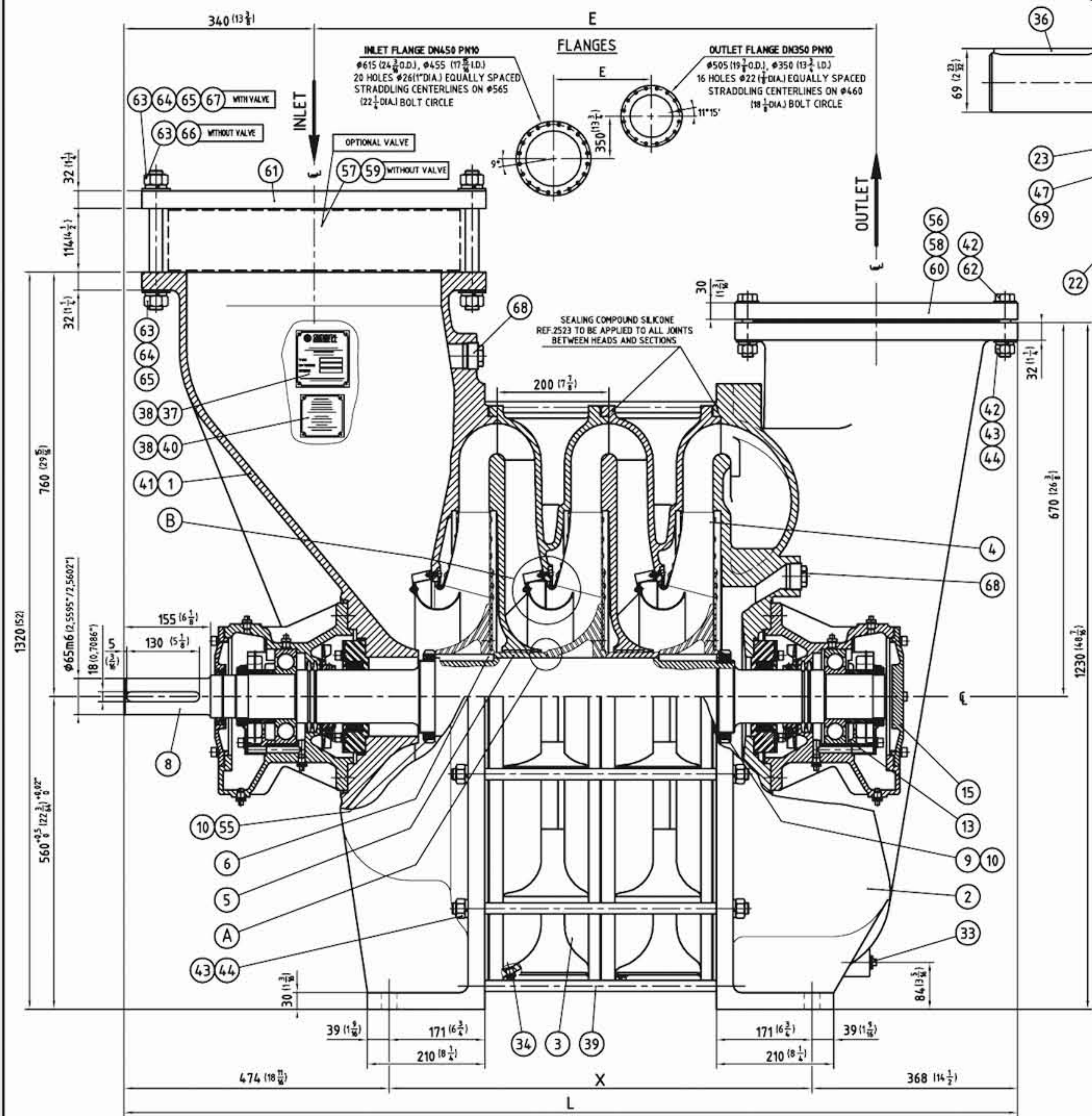


NOTES: DIMENSIONS IN PARENTHESIS ARE IN INCHES
 - RECOMMENDED TIE ROD TORQUE: 4m.kg (30 F.T. LBS.)
 - OIL QUANTITY BY HOUSING BEARING 1,36 liter.
 - USED OIL SPECIFICATIONS
 JAROGEAR Z.150 Extreme oil pressure SERVICE API-GL5
 EQUIVALENT: ESSO SPARTAN EP 150
 ELF REDUCTELF SP 150
 TOTAL CARTER EP 150
 SHELL OPALA 150

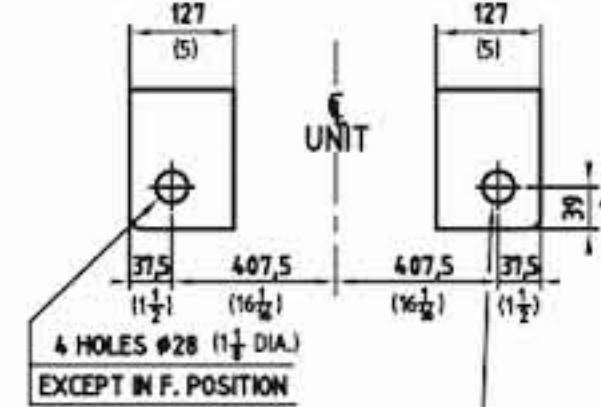
REV.	DATE	EDJ	BY	REVISIONS
1	15/04/1992		SD	ORIGINAL
2	15/04/1992		SD	SHAFT MODIFICATION (DOW and ITEM 7)
3	15/04/1992		SD	ITEM 54 - 55
4	15/04/1992		SD	OIL RESERVOIR MODIFICATION
5	15/04/1992		SD	PART NO - FAN GUARD



SEALING COMPOUND SILICONE REF. S.2523 TO BE APPLIED BETWEEN HEADS AND RETAINERS



FOOT DIMENSIONS, ALL HEADS



NOTE: 1 M24 TAPPED HOLE ON F HEAD POSITION

Chart II IMPELLERS TYPE (ITEM 4)

QTY.	PART NO.	IMPELLER TYPE	DWG.	WEIGHT: kg
	S.6004	N° 8301 BC	4.00.04	13
	S.6005	N° 8302 BC	4.00.05	13
	S.6006	N° 8311 R	4.00.06	13
	S.6007	N° 8312 R	4.00.09	13

Chart III WITH VALVE WITHOUT VALVE

QTY.	ITEM 57	ITEM 59	ITEM 64	ITEM 65	ITEM 66	ITEM 67
	0	1	0	1	0	0
	4.0	2.0	4.0	2.0	2.0	0
	2.0	0	10.0	13.0	16.0	19.0
	2.0	0	22.0	28.0	35.0	43.0

Chart I TYPE

PART NO. ITEM 8	400.01	400.02	400.03	400.04
S.6011	S.6012	S.6013	S.6014	
54	38	102	126	
PART NO. ITEM 39	S.14.48	S.14.49	S.14.50	S.14.51
ITEM 3	0	1	2	3
ITEM 4	0	2	3	4
ITEM 5	0	1	2	3
ITEM 6	1	2	3	4
ITEM 34	8	9	10	11
ITEM 51	1	2	3	4
ITEM 52	7	14	21	28
ITEM 53	7	14	21	28
ITEM 54	7	14	21	28

69	12	CHC M10-050	SCREW, CHC M10-50		
68	2	S.6027	PLUG PIPE, 1/2 GAS		
67	See chart I	S.2237	TIE ROD #24 lg240		C.STEEL
66	See chart II	H M24-110	SCREW, H M24-110		
65	See chart II	H M24	NUT, H24		
64	See chart III	W24	WASHER LOCK, W24		
63	4.0	M24	WASHER, M24		
62	16	H M20-100	SCREW, H M20-100		
61	1	S.6477	COMPANION FLANGE DN450 PN10		C.STEEL 28
60	1	S.1429	COMPANION FLANGE DN350 PN10		C.STEEL 22,3
59	See chart III	S.6464	GASKET, FLANGE DN450	005	
58	1	S.1430	GASKET, FLANGE DN350	005	
57	See chart III	S.6498	COVER, PORT / DN450	050	C.STEEL
56	1	S.1428	COVER, PORT / DN350	050	C.STEEL
55	1	AHC M08-16	SCREW, AHC M8-16		S.STEEL
54	See chart I	GS M06-010	SCREW, GS M6-10		S.STEEL
53	See chart I	CHC M06-020	SCREW, CHC M6-20		S.STEEL
52	See chart I	S.6022	BRACKET, BAFFLE	400-15	S.STEEL
51	See chart I	S.6021	BAFFLE	400-14	S.STEEL
49	12	CHC M10-025	SCREW, CHC M10-25		
48	12	CHC M10-055	SCREW, CHC M10-55		
47	36	W10	WASHER LOCK, W10		
46	4	AHC M08-010, PL	SCREW, AHC M8-10, PL		
45	16	H M20-040	SCREW, H M20-40		
44	38	H M20	NUT, H20		
43	54	W20	WASHER LOCK, W20		
42	32	M20	WASHER, M20		
41	1	S.1802	VALVE WARNING PLATE	008	
40	1	S.1801	SURGE WARNING PLATE	092	ALUMINIUM
39	12	See chart I	TIE ROD	010	C.STEEL
38	8	CT02 89-008	RIVET, #2, 89-8		C.STEEL
37	1	S.0216	NAME PLATE	284	ALUMINIUM
36	1	S.6026	KEY, COUPLING 18x11x130	003	C.STEEL
35	2	S.2581	PLUG PIPE, 1/4 GAS MAGNETIC		
34	See chart I	S.0200	PLUG PIPE, 1/4 GAS		
33	1	S.1427	PLUG PIPE, 1/2 GAS		
32	2	S.2580	NIPPLE, FF 1/4 GAS		
31	2	S.2579	NIPPLE, MM 1/4 GAS		
30	2	S.1423	OILER 1/4 GAS		
29	2	S.6037	CAP, OIL RESERVOIR	400-26	ALUMINIUM
28					
27	4	S.6043	FAN GUARD, BEARING HOUSING	400-39	C.STEEL
26	2	S.1417	GASKET, BEARING CAP	250-16	
25	2	S.1422	NUT, KM16		
24	2	S.1421	WASHER, MB16		
23	2	S.1411	SPACER, SHORT	250-14	C.STEEL
22	2	S.5833	OIL SLINGER	251-13	C.STEEL
21	2	S.1412	SPACER, LONG	250-14	C.STEEL
20	2	S.5807	BEARING, BALL 6316 C3 THT		3,7
19	2	S.1410	FAN, COOLING	75-12	ALUMINIUM
18	4	S.1426	GRAPHIT RING		
17	2	S.1409	ADAPTER, GRAPHIT RING	250-12	ALUMINIUM
16	2	S.1408	RETAINER, GRAPHIT RING	250-12	ALUMINIUM 2
15	1	S.1404	CAP, BEARING-OUTLET END	250-10	CAST IRON 4
14	1	S.1405	CAP, BEARING-INLET END	250-09	CAST IRON 3,2
13	1	S.6036	OIL RESERVOIR, OUTLET END	400-25	CAST IRON 1,8
12	1	S.6035	OIL RESERVOIR, INLET END	400-24	CAST IRON 2
11	2	S.5810	HOUSING, BEARING	400-07	CAST IRON 30
10	2	S.5830	NUT, KM26		
9	1	S.5829	WASHER, MB26		
8	1	See chart I	SHAFT	400-11	C.STEEL See chart I
7	Variable	S.5808	SHIM, IMPELLER	006	C.STEEL
6	See chart I	S.6008	KEY, IMPELLER 14x12x103	003	C.STEEL
5	See chart I	S.5806	SPACER, IMPELLER	251-12	C.STEEL 2,9
4	See chart I	See chart II	IMPELLER	See chart II	ALUMINIUM See chart II
3	See chart I	S.6003	SECTION, INTERMEDIATE	400-03	CAST IRON 255
2	1	S.6002	HEAD, OUTLET	400-02	CAST IRON 400
1	1	S.6001	HEAD, INLET	400-01	CAST IRON 380

CONTINENTAL INDUSTRIE S.A.
 TYPE 400 RT
 INLET END DRIVE
 SECTIONAL DRAWING 1 THRU 4 STAGES
 GRAPHIT RING SEAL

ASSEMBLY: _____
 DATE: 30/04/1992
 SCALE: A1
 DWG No. 400-AG1A 4

QUOTATION: DR: 80
 ORDER No.: 15/06/1992
 REVISIONS: 11/08/1992
 03/11/1992
 26/01/1993