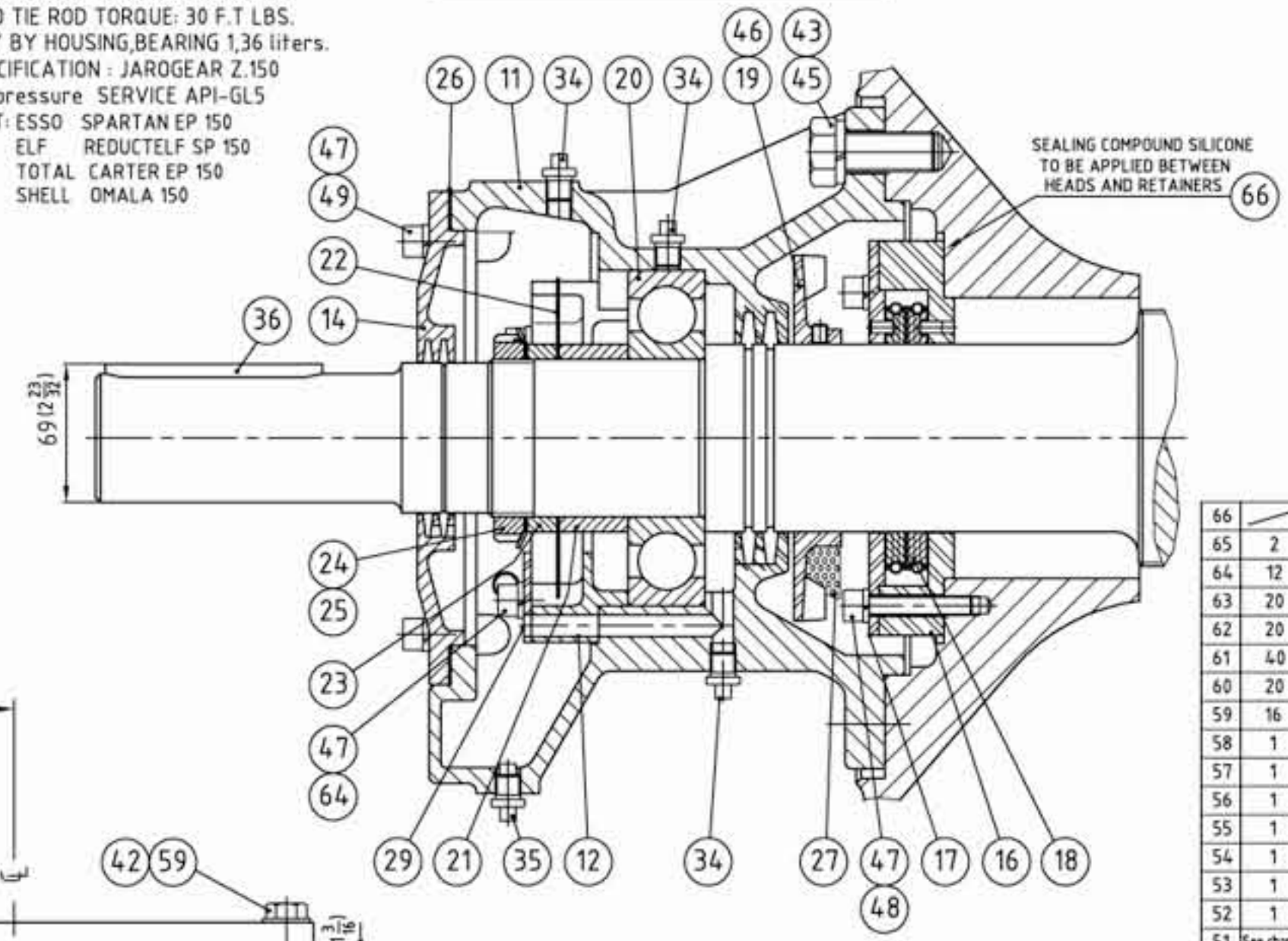


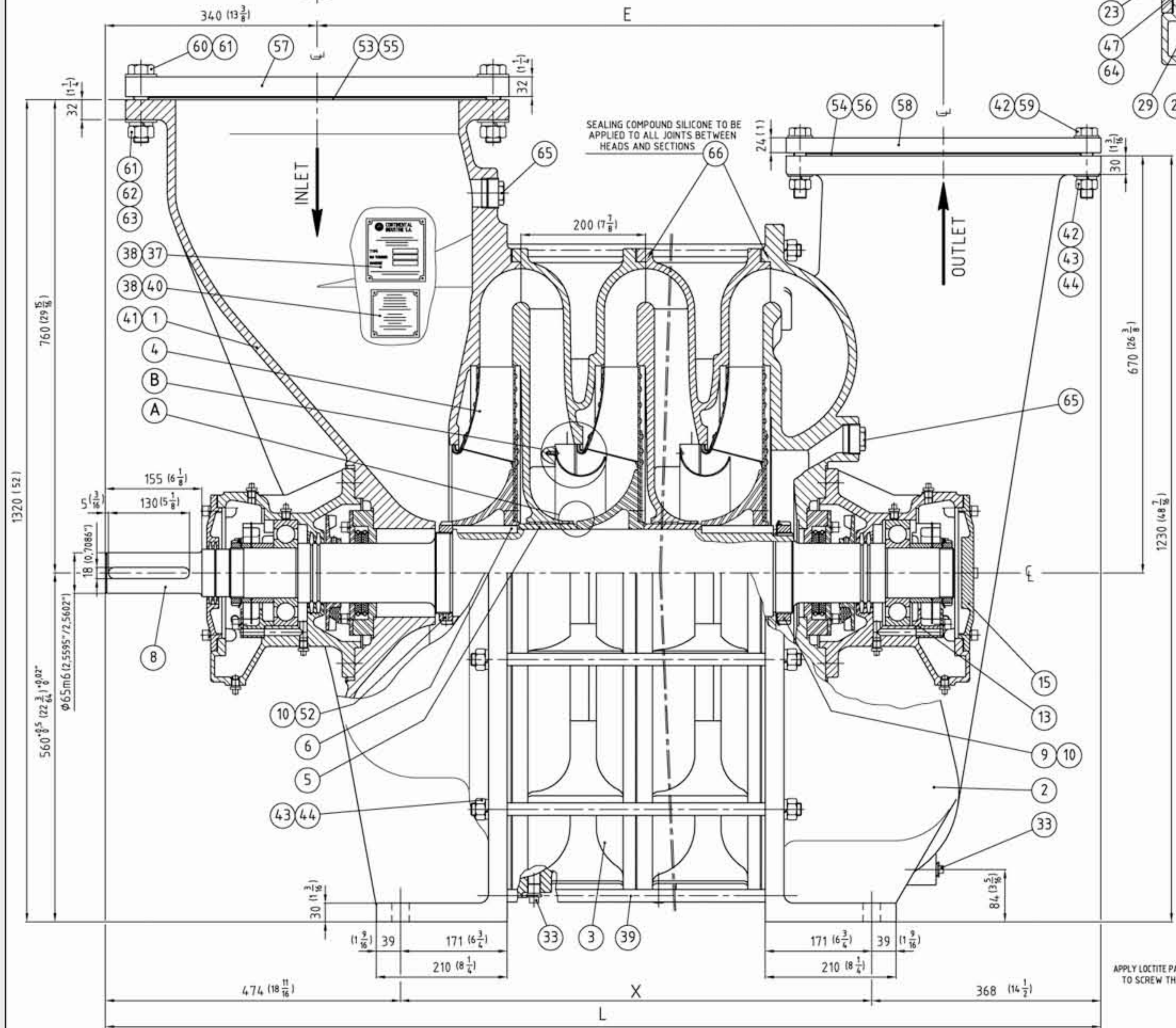
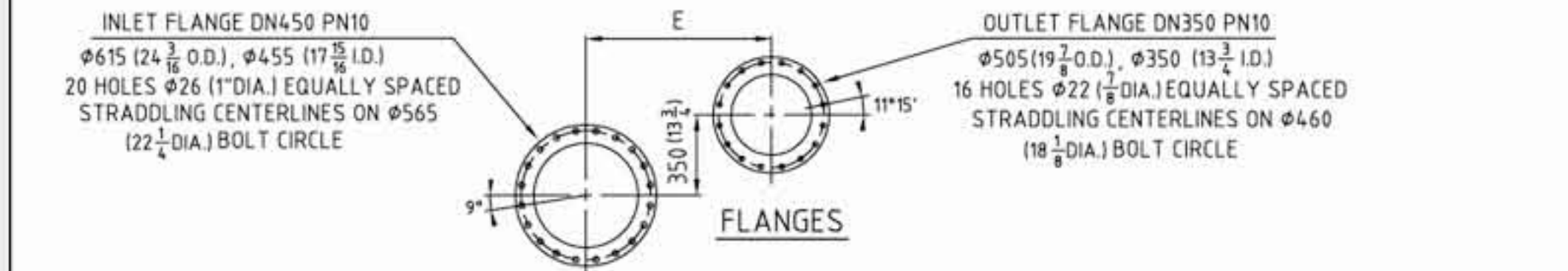
NOTES:
 --DIMENSIONS IN PARENTHESIS ARE IN INCHES.
 --RECOMMENDED TIE ROD TORQUE: 30 F.T LBS.
 --OIL QUANTITY BY HOUSING BEARING 1,36 liters.
 --USED OIL SPECIFICATION : JAROGEAR Z.150
 Extreme oil pressure SERVICE API-GL5
 EQUIVALENT: ESSO SPARTAN EP 150
 ELF REDUCTELF SP 150
 TOTAL CARTER EP 150
 SHELL OMALA 150

INLET BEARING HOUSING DETAIL

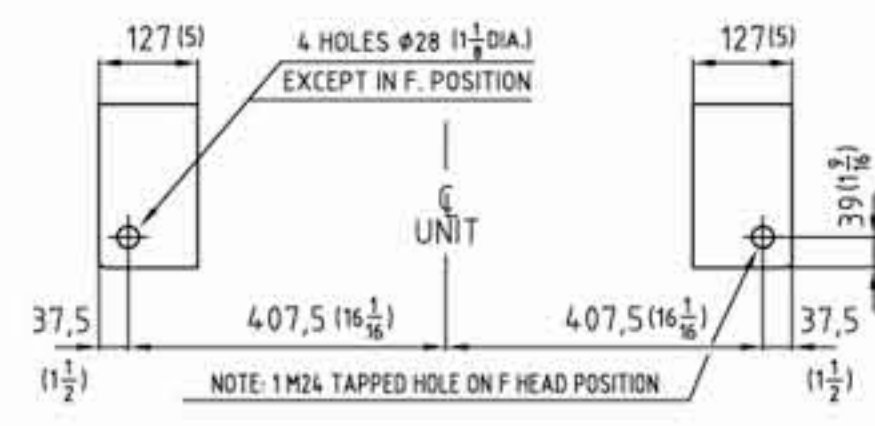


| REV | DATE | E.D.N | BY | REVISIONS |
|-----|------------|-------|----|-----------|
| 5 | 12/09/2003 | | BD | ORIGINAL |

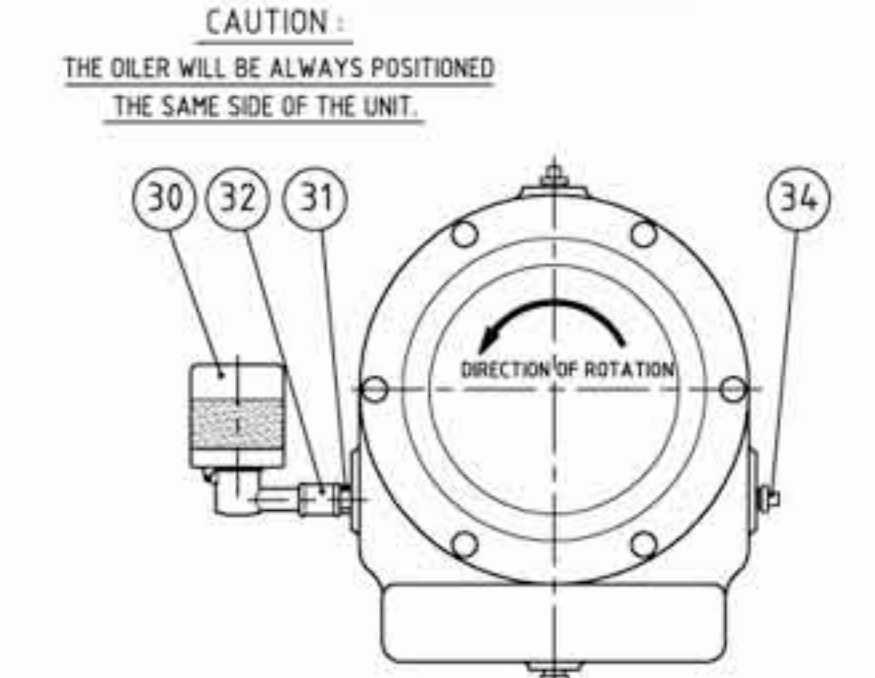
| Chart II | | IMPELLERS TYPE (ITEM 4) | | |
|----------|----------|-------------------------|--------|-----------|
| QTY. | PART NO. | IMPELLER TYPE | DWG. | WEIGHT kg |
| | S.6004 | N°8301 BC | 400-04 | 13 |
| | S.6005 | N°8302 BC | 400-05 | 13 |
| | S.6006 | N°8311 R | 400-06 | 13 |
| | S.6007 | N°8312 R | 400-09 | 13 |



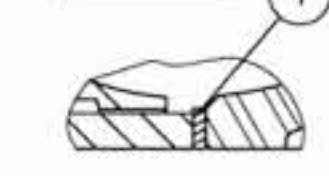
FOOT DIMENSIONS, ALL HEADS



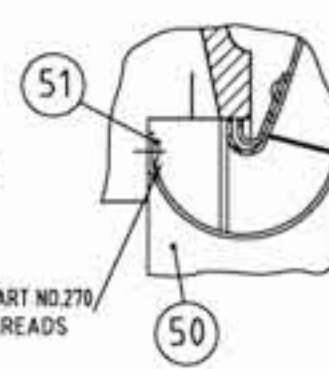
OILER POSITION



DETAIL A



DETAIL B



| Chart I | TYPE | 400.01 | 400.02 | 400.03 | 400.04 |
|--------------------|---------------|----------------|----------------|----------------|--------|
| PART NO. ITEM 8 | S.6011 | S.6012 | S.6013 | S.6014 | |
| WEIGHT-kg, ITEM 8 | 54 | 78 | 102 | 126 | |
| PART NO. ITEM 39 | S.1448 | S.1449 | S.1450 | S.1451 | |
| WEIGHT-kg, ITEM 39 | 0,3 | 0,8 | 1,3 | 1,8 | |
| QTY. | ITEM 3 | 0 | 1 | 2 | 3 |
| | ITEM 4 | 1 | 2 | 3 | 4 |
| | ITEM 5 | 0 | 1 | 2 | 3 |
| | ITEM 6 | 1 | 2 | 3 | 4 |
| | ITEM 33 | 1 | 2 | 3 | 4 |
| | ITEM 50 | 1 | 2 | 3 | 4 |
| | ITEM 51 | 7 | 14 | 21 | 28 |
| DIMENSION E | 605 (55 3/8) | 805 (63 3/8) | 1005 (77 3/8) | 1205 (94 3/8) | |
| DIMENSION X | 356 (45 1/2) | 556 (63 3/8) | 756 (94 3/8) | 956 (118 1/2) | |
| DIMENSION L | 1198 (78 3/8) | 1398 (106 3/8) | 1598 (124 3/8) | 1798 (140 1/2) | |
| WEIGHT: kg | 1000 | 1300 | 1600 | 1900 | |
| WEIGHT: LBS | 2204 | 2866 | 3527 | 4188 | |

| | | | | | |
|----|-------------|----------------|-----------------------------|--------------|------------------------|
| 66 | S.2523 | SILICONE JOINT | | | |
| 65 | 2 | S.6027 | PLUG PIPE, 1 1/2 GAS | | |
| 64 | 12 | CHC M10-050 | SCREW, CHC M10-50 | | |
| 63 | 20 | H M24 | NUT, H24 | | |
| 62 | 20 | W24 | WASHER LOCK, W24 | | |
| 61 | 40 | M24 | WASHER, M24 | | |
| 60 | 20 | H M24-110 | SCREW, H M24-110 | | 0,45 |
| 59 | 16 | H M20-100 | SCREW, H M20-100 | | 0,28 |
| 58 | 1 | S.6477 | COMPANION FLANGE DN450 PN10 | | C.STEEL 28 |
| 57 | 1 | S.1429 | COMPANION FLANGE DN350 PN10 | | C.STEEL 18 |
| 56 | 1 | S.6464 | GASKET, FLANGE DN450 | 005 | |
| 55 | 1 | S.1430 | GASKET, FLANGE DN350 | 005 | |
| 54 | 1 | S.6498 | COVER, PORT / DN450 | 050 | C.STEEL |
| 53 | 1 | S.1428 | COVER, PORT / DN350 | 050 | C.STEEL 1 |
| 52 | 1 | AHC M08-16J | SCREW, AHC M8-16 | | S.STEEL |
| 51 | See chart I | GS M08-010J | SCREW, GS M8-10 | | S.STEEL |
| 50 | See chart I | S.6076 | BAFFLE | 400-154 | S.STEEL 1,9 |
| 49 | 12 | CHC M10-025 | SCREW, CHC M10-25 | | |
| 48 | 12 | CHC M10-055 | SCREW, CHC M10-55 | | |
| 47 | 40 | W10 | WASHER LOCK, W10 | | |
| 46 | 4 | AHC M08-010,PL | SCREW, AHC M8-10,PL | | |
| 45 | 16 | H M20-040 | SCREW, H M20-40 | | 0,14 |
| 44 | 38 | H M20 | NUT, H20 | | |
| 43 | 54 | W20 | WASHER LOCK, W20 | | |
| 42 | 32 | M20 | WASHER, M20 | | |
| 41 | 1 | S.1802 | VALVE WARNING PLATE | 008 | |
| 40 | 1 | S.1801 | SURGE WARNING PLATE | 092 | ALUMINIUM |
| 39 | 12 | See chart I | TIE ROD | 010 | C.STEEL See chart I |
| 38 | 8 | CT02 89-008 | RIVET, #2,89-8 | | C.STEEL |
| 37 | 1 | S.0216 | NAME PLATE | 284 | ALUMINIUM |
| 36 | 1 | S.6026 | KEY, COUPLING 18x11x130 | 003 | C.STEEL 0,2 |
| 35 | 2 | S.2581 | PLUG PIPE, 1/4 GAS MAGNETIC | | |
| 34 | 8 | S.0200 | PLUG PIPE, 1/4 GAS | | |
| 33 | See chart I | S.1427 | PLUG PIPE, 1/2 GAS | | |
| 32 | 2 | S.2580 | NIPPLE, FF 1/4 GAS | | |
| 31 | 2 | S.2579 | NIPPLE, MM 1/4 GAS | | |
| 30 | 2 | S.1423 | OILER 1/4 GAS | | 0,4 |
| 29 | 2 | S.6037 | CAP, OIL RESERVOIR | 400-26 | C.STEEL |
| 28 | | | | | |
| 27 | 4 | S.6043 | FAN GUARD, BEARING HOUSING | 400-39 | C.STEEL 0,1 |
| 26 | 2 | S.1417 | GASKET, BEARING CAP | 250-16 | |
| 25 | 2 | S.1422 | NUT, KM16 | | 0,4 |
| 24 | 2 | S.1421 | WASHER, MB16 | | |
| 23 | 2 | S.1411 | SPACER, SHORT | 250-14 | C.STEEL 0,17 |
| 22 | 2 | S.5833 | OIL SLINGER | 251-13 | C.STEEL 0,15 |
| 21 | 2 | S.1412 | SPACER, LONG | 250-14 | C.STEEL 0,6 |
| 20 | 2 | S.5807 | BEARING, BALL 6316 C3 THT | | 3,7 |
| 19 | 2 | S.1410 | FAN, COOLING | 75-12 | ALUMINIUM 0,3 |
| 18 | 4 | S.1466 | CARBON RING | 250-29 | CARBON |
| 17 | 2 | S.1465 | ADAPTER, CARBON RING | 250-28 | ALUMINIUM 0,3 |
| 16 | 2 | S.1464 | RETAINER, CARBON RING | 250-28 | ALUMINIUM 1,8 |
| 15 | 1 | S.1404 | CLOSED CAP, HOUSING BEARING | 250-10 | CAST IRON 4 |
| 14 | 1 | S.1405 | OPEN CAP, HOUSING BEARING | 250-09 | CAST IRON 3,2 |
| 13 | 1 | S.6036 | OIL RESERVOIR, OUTLET END | 400-25 | CAST IRON 1,8 |
| 12 | 1 | S.6035 | OIL RESERVOIR, INLET END | 400-24 | CAST IRON 2 |
| 11 | 2 | S.5810 | HOUSING, BEARING | 400-07 | CAST IRON 30 |
| 10 | 2 | S.5830 | NUT, KM26 | | 0,9 |
| 9 | 1 | S.5829 | WASHER, MB26 | | |
| 8 | 1 | See chart I | SHAFT | 400-11 | C.STEEL See chart I |
| 7 | Variable | S.5808 | SHIM, IMPELLER | 006 | C.STEEL |
| 6 | See chart I | S.6008 | KEY, IMPELLER 14x12x104 | 003 | C.STEEL 1,4 |
| 5 | See chart I | S.5806 | SPACER, IMPELLER | 251-12 | C.STEEL 3,15 |
| 4 | See chart I | See chart II | IMPELLER | See chart II | ALUMINIUM See chart II |
| 3 | See chart I | S.6003 | SECTION, INTERMEDIATE | 400-03 | CAST IRON 250 |
| 2 | 1 | S.6002 | HEAD, OUTLET | 400-02 | CAST IRON 415 |
| 1 | 1 | S.6001 | HEAD, INLET | 400-01 | CAST IRON 420 |

| ITEM | QTY. | PART NO. | DESCRIPTION | DWG. | MATERIAL | WEIGHT kg |
|---|------|----------|-------------|------|----------|-----------|
| CONTINENTAL INDUSTRIE S.A | | | | | | |
| TYPE 400A RT | | | | | | |
| INLET END DRIVE | | | | | | |
| ASSEMBLY: / | | | | | | |
| DATE: 12/09/2003 | | | | | | |
| S'TRIVIER/BOIGNANS FRANCE | | | | | | |
| SECTIONAL DRAWING 1 THRU 4 STAGES. | | | | | | |
| SCALE: A1 | | | | | | |
| QUOTATION: / | | | | | | |
| ORDER No.: DR. BD | | | | | | |
| CHRD. DR | | | | | | |
| REVISIONS: / | | | | | | |
| DWG No. REV | | | | | | |
| 400A-AC1A 0 | | | | | | |

This drawing is our property and cannot be copied or communicated to third parties without our authorization.