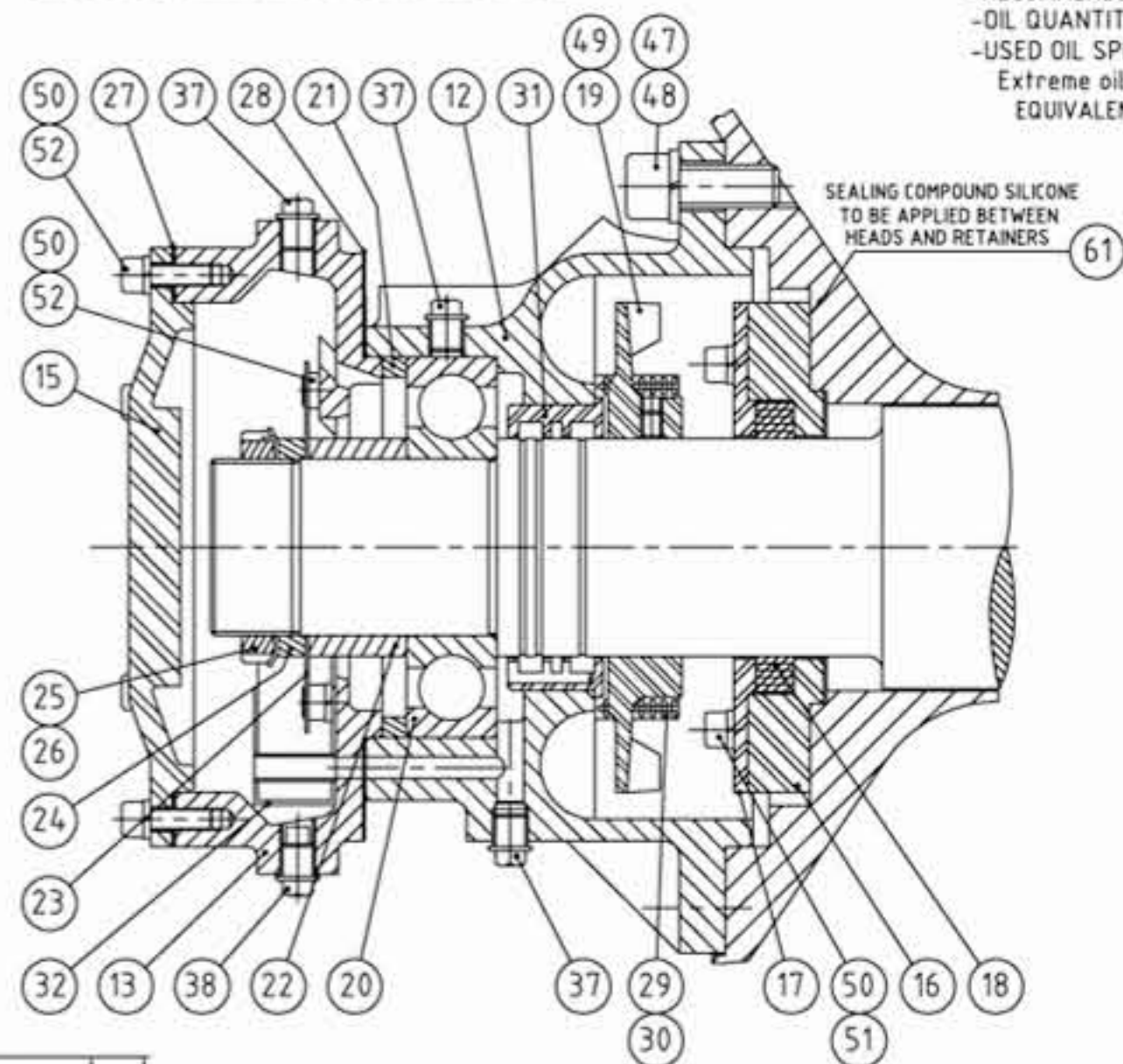


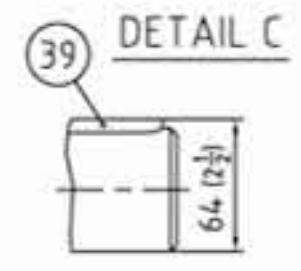
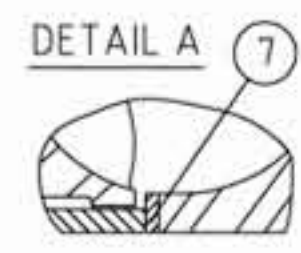
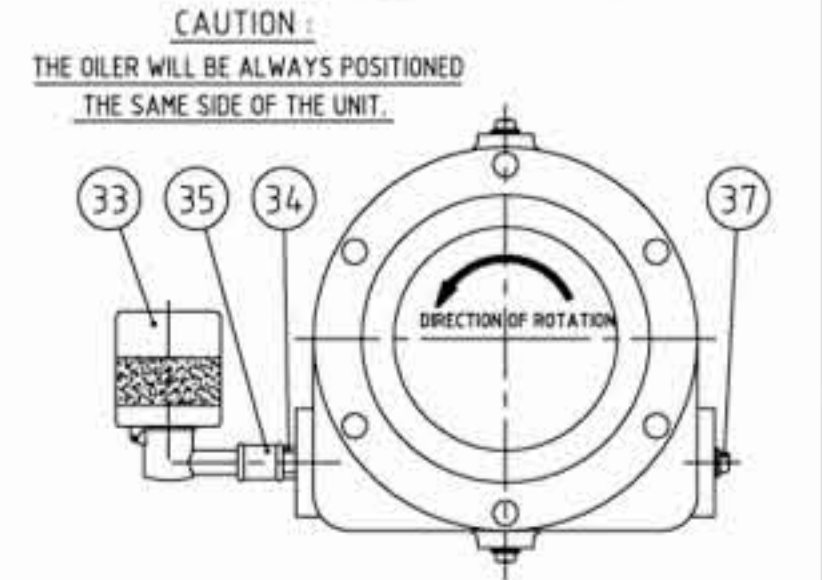
INLET BEARING HOUSING DETAIL



NOTES: -DIMENSIONS IN PARENTHESIS ARE IN INCHES.
 -RECOMMENDED THE ROD TORQUE: 30 F.T LBS.
 -OIL QUANTITY BY HOUSING, BEARING 0,56 liters.
 -USED OIL SPECIFICATION: JAROGEAR Z.150
 Extreme oil pressure SERVICE API-GL5
 EQUIVALENT: ESSO SPARTAN EP 150
 ELF REDUCTELF SP 150
 TOTAL CARTER EP 150
 SHELL OMALA 150

REV	DATE	EDN	BY	REVISIONS
8	09/04/2004		YF	ORIGINAL

OILER POSITION



FOOT DIMENSIONS, ALL HEADS

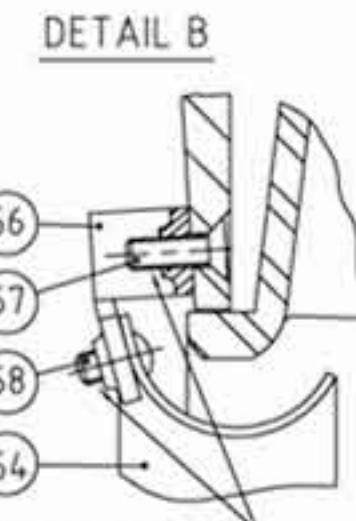
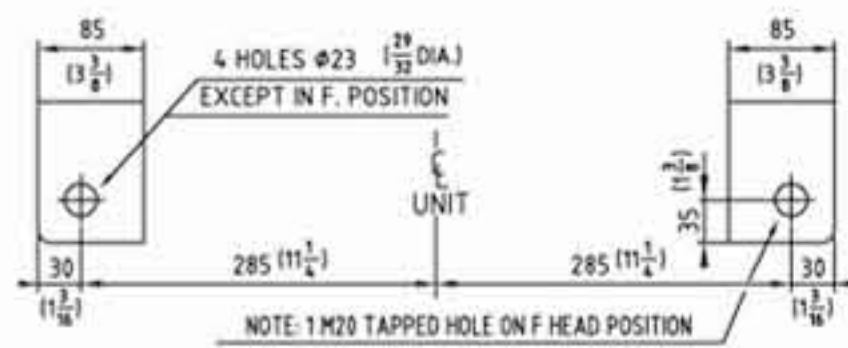
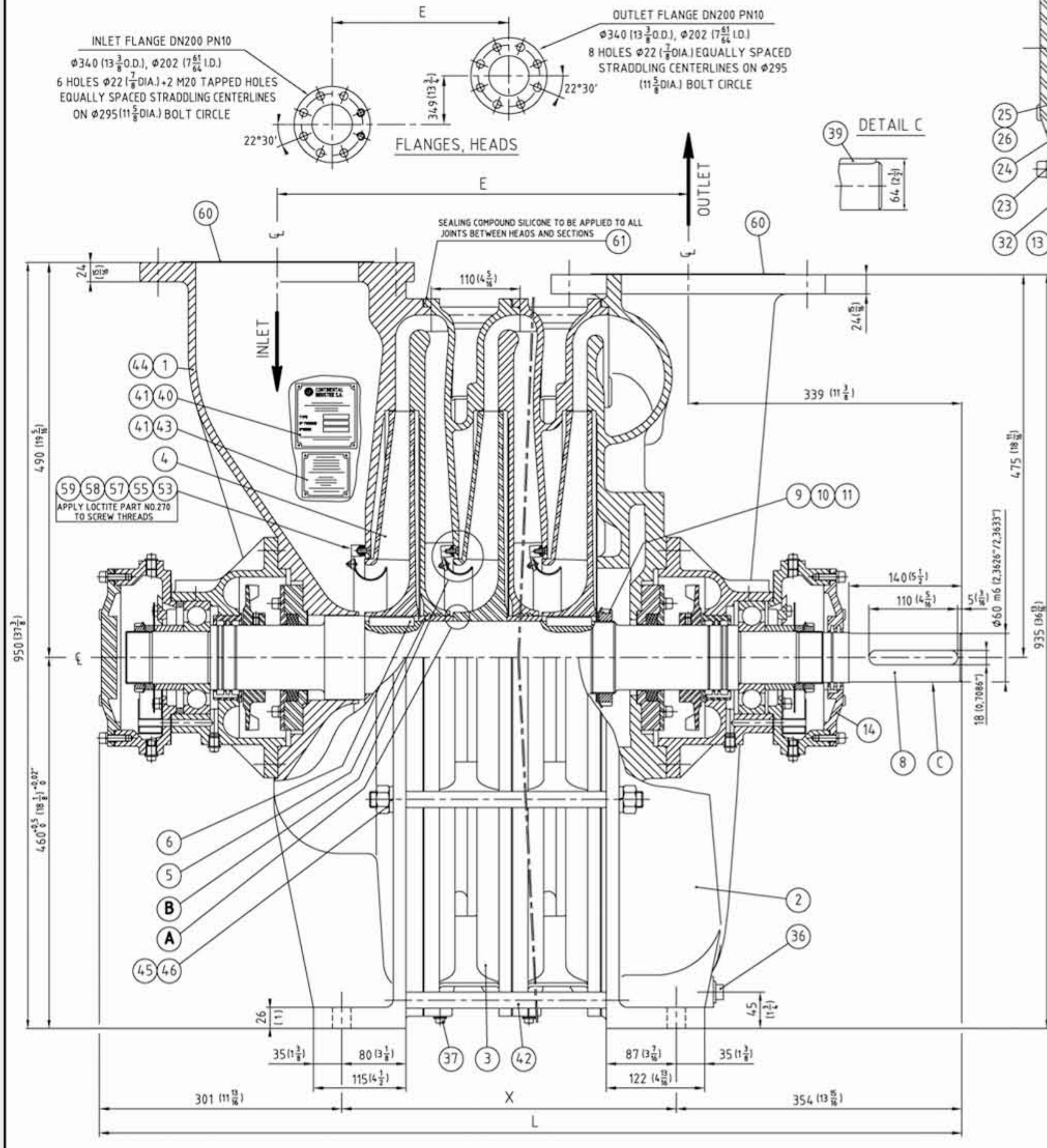


Chart II		IMPELLER TYPE (ITEM 4)			
QTY.	PART NO.	IMPELLER TYPE	DWG.	WEIGHT:kg	
	S.5204	N°5201	77-04	10	
	S.5348	N°5202	77-06	10	
	S.5350	N°5203	77-192	10	
	S.5207	N°5211	77-58	10	
	S.5205	N°5212	77-05	10	
	S.5206	N°5213	77-26	10,1	
	S.5209	N°5301	77-60	5,7	
	S.5282	N°5311	77-61	5,6	
	S.5283	N°5312	77-62	5,8	
	S.5285	N°5314	77-64	6,1	

Chart I	TYPE	077.01	077.02	077.03	077.04	077.05	077.06	077.07	077.08	077.09	077.10	077.11
PART NO. ITEM 8		S.5235	S.5236	S.5237	S.5238	S.5239	S.5240	S.5241	S.5242	S.5243	S.5244	S.5245
WEIGHT:kg. ITEM 8		28,7	34,2	39,6	45,1	50,6	56	61,5	67	72,4	77,9	83,4
PART NO. ITEM 42		S.1448	S.1244	S.5256	S.1035	S.1248	S.5257	S.5258	S.5259	S.5260	S.1453	S.5261
WEIGHT:kg. ITEM 42		0,3	0,58	0,84	1,1	1,4	1,65	1,92	2,2	2,46	2,75	3

61	1	S.2523	SILICONE, JOINT									
60	2	S.1013	COVER, PORT			050						C.STEEL
59	Variable	M05.1	WASHER, M5									S.STEEL
58	See chart I	GS M05-010.1	SCREW, GS M5-10									S.STEEL
57	See chart I	FHC M05-016.1	SCREW, FHC M5-16									S.STEEL
56	See chart I	S.5253	BRACKET, BAFFLE			77-22						S.STEEL
55	4	S.0823	BRACKET, BAFFLE			50-20						S.STEEL
54	See chart I	S.5252	BAFFLE, INTERMEDIATE SECTION			77-20						S.STEEL 0,4
53	1	S.1039	BAFFLE, INLET HEAD			77-42						S.STEEL 0,4
52	24	CHC M08-025	SCREW, CHC M8-25									
51	12	CHC M08-045	SCHRAUBE, CHC M8-45									
50	36	W08	WASHER LOCK, W8									
49	4	AHC M08-010.PL	SCREW, AHC M8-10.PL									
48	16	CHC M16-040	SCREW, CHC M16-40									
47	16	W16	WASHER LOCK, W16									
46	30	H M20	NUT, H20									
45	30	W20	WASHER LOCK, W20									
44	1	S.1802	VALVE WARNING PLATE			008						
43	1	S.1801	SURGE WARNING PLATE			092						ALUMINIUM
42	8	See chart I	TIE ROD			010						C.STEEL See chart I
41	8	CT02.89-008	RIVET, #2,89-8									
40	1	S.0216	NAME PLATE			284						ALUMINIUM
39	1	S.1414	KEY, COUPLING 18x11x10			003						C.STEEL 0,17
38	2	S.2581	PLUG, 1/4 GAS MAGNETIC									
37	See chart I	S.0200	PLUG, 1/4 GAS									
36	1	S.1012	PLUG, 3/8 GAS									
35	2	S.2580	NIPPLE, FF 1/4 GAS									
34	2	S.2579	NIPPLE, MM 1/4 GAS									
33	2	S.1423	OILER 1/4 GAS									0,4
32	2	S.1273	RETAINER, SUMP			150-45						C.STEEL 0,2
31	2	S.1215	LABYRINTH, BEARING HOUSING			75-13						ALUMINIUM 0,24
30	2	S.1218	FAN GUARD, BEARING HOUSING			75-41						C.STEEL 0,1
29	2	S.1214	FAN GUARD, BEARING HOUSING			75-41						C.STEEL 0,1
28	2	S.1275	GASKET, OIL RESERVOIR			150-47						
27	2	S.1216	GASKET, BEARING CAP			150-18						
26	2	S.1222	NUT, KM13									0,2
25	2	S.1221	WASHER, MB13									
24	2	S.1211	SPACER, SHORT			75-17						C.STEEL 0,13
23	2	S.1213	OIL SLINGER			75-18						C.STEEL 0,12
22	2	S.1212	SPACER, LONG			75-16						C.STEEL 0,45
21	1	S.1272	SPACER, BEARING			150-46						C.STEEL 0,22
20	2	S.1262	BEARING, BALL 6313 C3									2,1
19	2	S.1210	FAN, COOLING			75-12						ALUMINIUM 0,65
18	2	S.1223	GRAPHIT RING									
17	2	S.1209	ADAPTER, GRAPHIT RING			77-57						ALUMINIUM 0,9
16	2	S.1208	RETAINER, GRAPHIT RING			77-56						ALUMINIUM 1,2
15	1	S.1204	CAP, BEARING-OUTLET END			150-14						ALUMINIUM 1,3
14	1	S.1205	CAP, BEARING-INLET END			150-13						ALUMINIUM 1,1
13	2	S.1271	OIL RESERVOIR			150-44						CAST IRON 5,7
12	2	S.1270	HOUSING, BEARING			150-48						CAST IRON 13
11	1	S.5224	NUT, KM18									0,5
10	1	S.5225	WASHER, MB18									
9	2	S.5226	WAVY SPRING			77-12						C.STEEL
8	1	See chart I	SHAFT			77-07						C.STEEL See chart I
7	Variable	S.5223	SHIM, IMPELLER			006						C.STEEL
6	See chart I	S.5233	KEY, IMPELLER 12x12x56			003						C.STEEL 0,06
5	See chart I	S.5222	SPACER, IMPELLER			77-08						C.STEEL 0,7
4	See chart I	See chart II	IMPELLER			See chart II						ALUMINIUM See chart II
3	See chart I	S.5251	SECTION, INTERMEDIATE			77-21						CAST IRON 126
2	1	S.5255	HEAD, OUTLET			77-02						CAST IRON 160
1	1	S.5254	HEAD, INLET			77-33						CAST IRON 162



ITEM	QTY.	PART NO.	DESCRIPTION	DWG.	MATERIAL	WEIGHT:kg
CONTINENTAL INDUSTRIE S.A						
TYPE 077A						
OUTLET END DRIVE						
SECTIONAL DRAWING						
GRAPHIT RING SEAL						
QUOTATION:			DR: BD		CHKD. DR	
ORDER No.:			09/04/2004			
REVISIONS:						
ASSEMBLY:			DATE: 06/07/2004			
SCALE:			SIZE: A1			
DWG No.:			77A-RG1A		REV. 1	

This drawing is a property of CONTINENTAL INDUSTRIE, FRANCE