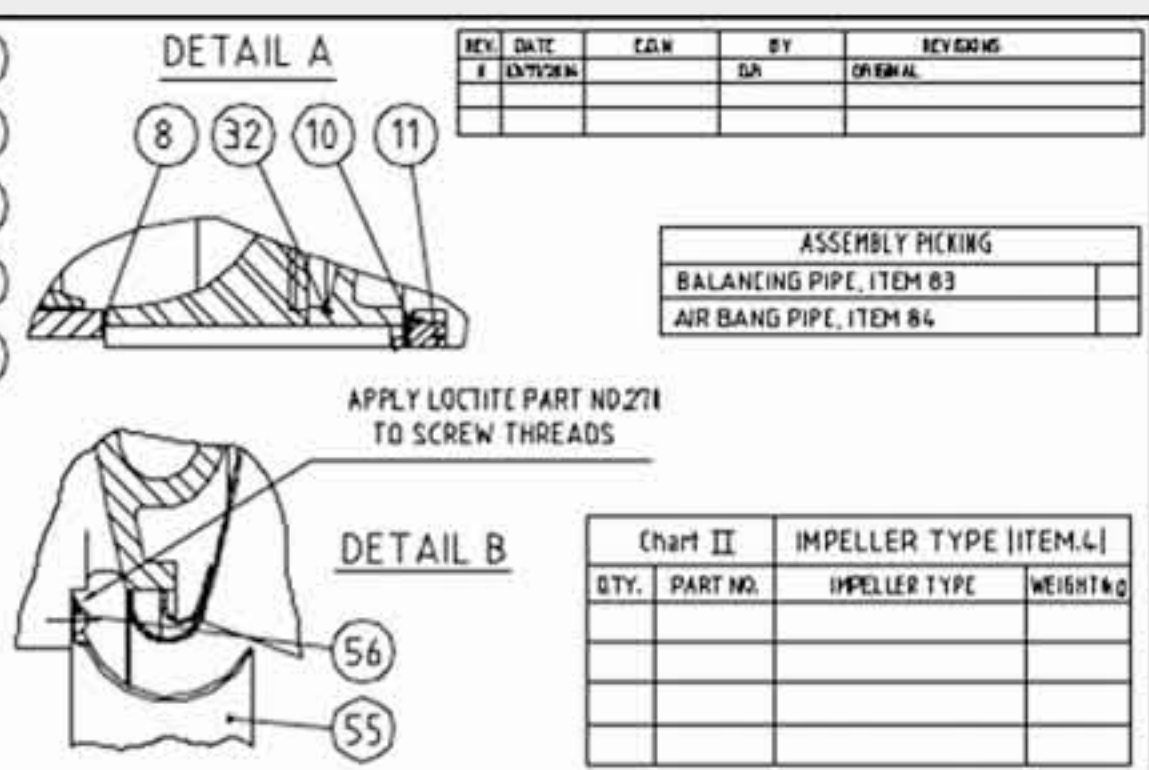
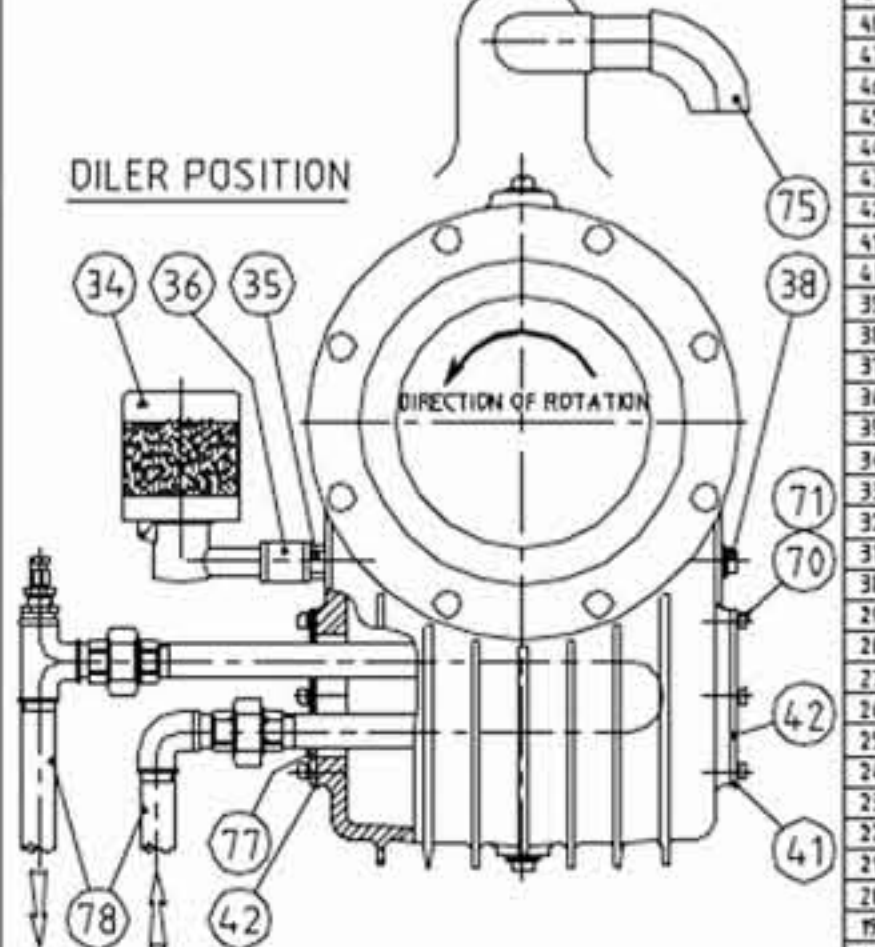
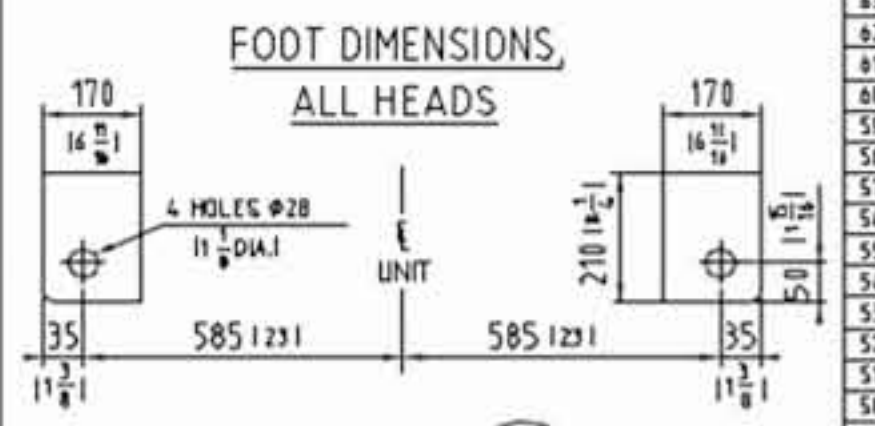
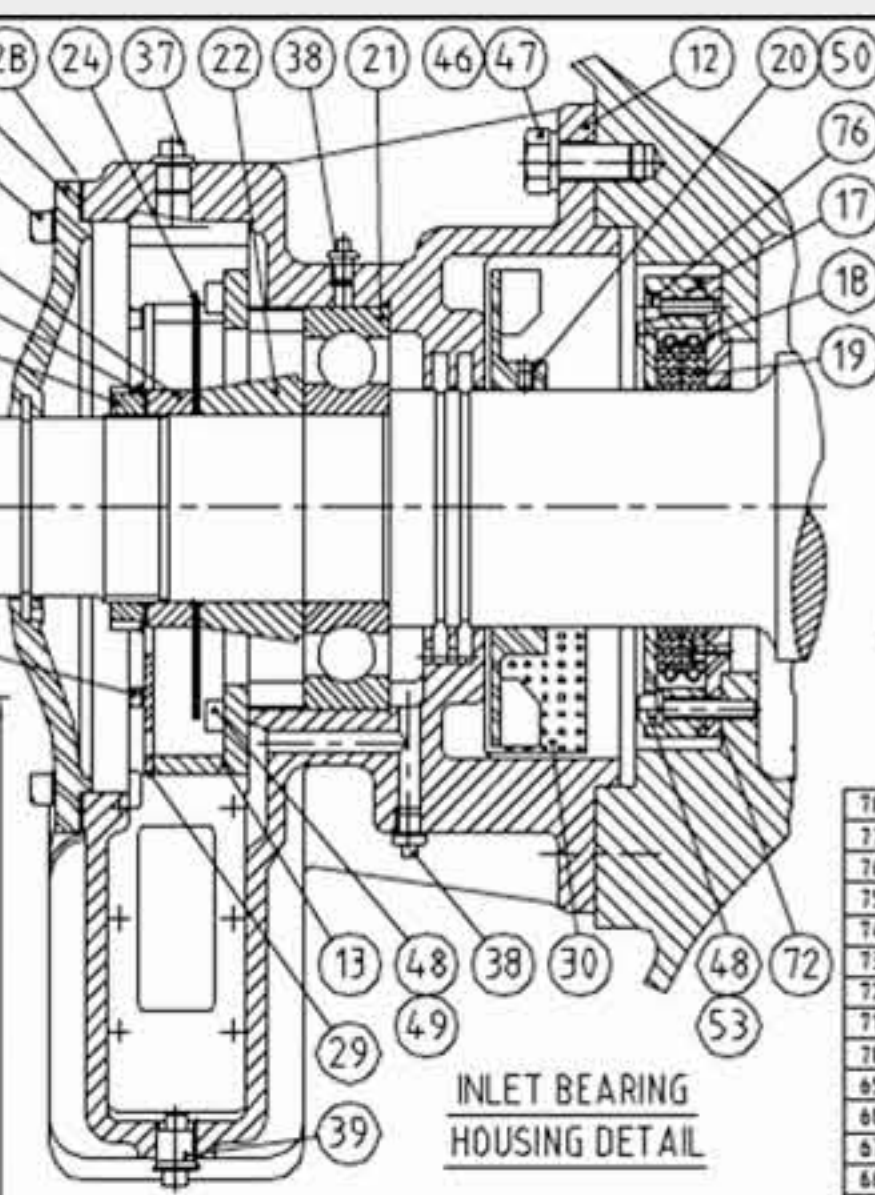
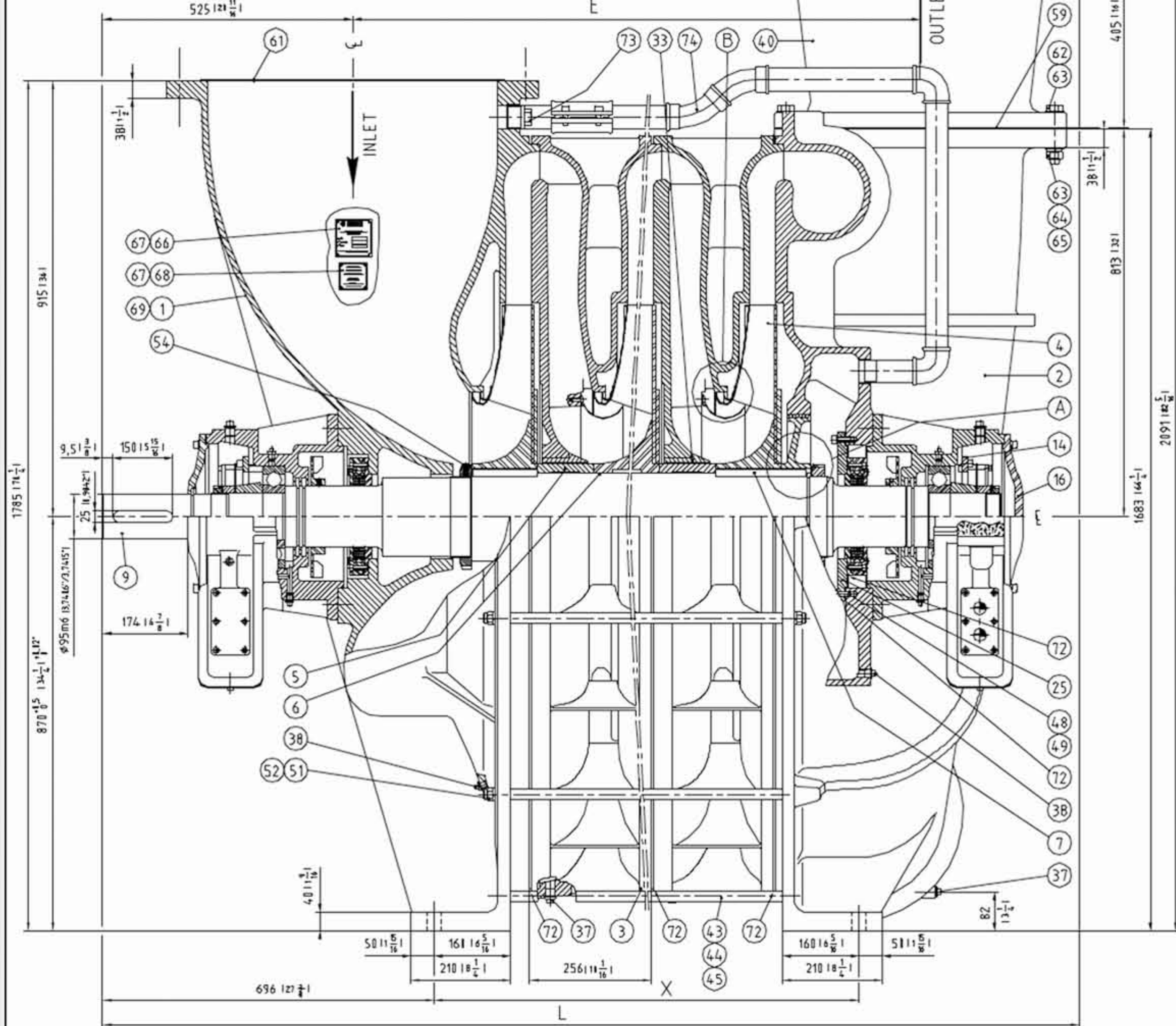
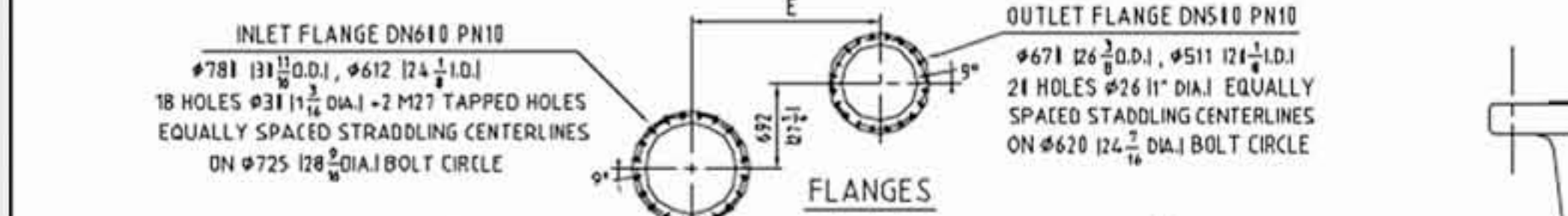


NOTES:  
 -DIMENSIONS IN PARENTHESIS ARE IN INCHES.  
 -RECOMMENDED TIE ROD TORQUE: 31 FT LBS.  
 -OIL QUANTITY BY HOUSING BEARING 5 Liters.  
 -USED OIL SPECIFICATION  
 JAROGEAR Z.151 Extreme oil pressure SERVICE API-GL5  
 EQUIVALENT: ESSO SPARTAN EP 151  
 ELF REDUKTELF SP 151  
 TOTAL CARTER EP 151  
 SHELL OMALA 151  
 -WATER COOLING SYSTEM  
 Flow: 6 l/min  
 Pressure: 3 bars



REV	DATE	EDW	BY	REVISIONS
1				

Chart II	IMPELLER TYPE (ITEM 4)		
QTY.	PART NO.	IMPELLER TYPE	WEIGHT kg

ITEM	QTY.	PART NO.	DESCRIPTION	DWG.	MATERIAL	WEIGHT kg
78	1	S.6566	OUTLET WATER COOLING PIPE	610-281	S.STEEL	24
77	1	S.6566	CAP. OUTLET BEARING	601-201	C.STEEL	
76	4	CHC M10-131	SCREW, CHC M10-131			
75	1	S.6511	AIR BANG PIPE (OPTION)			
74	1	S.6511	BALANCING PIPE (OPTION)			
73	1 or 1	S.6127	PLUG 1" V2 GAS			
72	1	S.2523	SILICONE JOINT		SILICONE	
71	24	W18	WASHER LOCK, W18			
70	24	CHC M10-121	SCREW, CHC M10-121			
69	1	S.1812	VALVE WARNING PLATE		ALUMINIUM	
68	1	S.1811	SLIDE WARNING PLATE		C.STEEL	
67	8	CT 12.85-110	NUT, 12.85-110		C.STEEL	
66	1	S.1216	NAME PLATE	286	ALUMINIUM	
65	4	H M24	NUT, M24			
64	28	W24	WASHER LOCK, W24			
63	4	M24	WASHER, M24			
62	28	H M24-110	SCREW, H M24-110			
61	1	S.6472	COVER, PORT / DN 611		C.STEEL	4
60	1	S.6471	COVER, PORT / DN 511		C.STEEL	29
59	1	S.6464	GASKET, FLANGE DN 51	115		
58	12	CHC M10-116	SCREW, CHC M10-116			
57	12	W16	WASHER LOCK, W16			
56	See Chart I	GS M18-121	SCREW, GS M18-21		S.STEEL	
55	See Chart I	S.6585	BAFFLE, INTERMEDIATE SECTION	610-237	S.STEEL	14
54	1	AHC M18-131	SCREW, AHC M18-31			
53	12	CHC M10-150	SCREW, CHC M10-51			
52	28	H M22	NUT, M22			
51	28	W22	WASHER LOCK, W22			
50	4	AHC M18-110	SCREW, M18-11, PL			
49	4	CHC M10-031	SCREW, CHC M10-31			
48	52	W18	WASHER LOCK, W18			
47	16	H M12-151	SCREW, H M12-51			
46	16	W21	WASHER LOCK, W21			
45	1 or 2	See Chart I	TIE ROD	111	C.STEEL	
44	7 or 4	See Chart I	TIE ROD	111	C.STEEL	
43	5 or 6	See Chart I	TIE ROD	111	C.STEEL	
42	3	S.6467	CAP. BEARING	601-101	C.STEEL	
41	4	S.6454	GASKET, BEARING CAP	601-50		
40	1	S.6437	REDUCTION COKE DN50 / DN151 (OPTION)	611-31	CAST IRON	21
39	2	S.2748	PLUG, V2 GAS MAGNETIC			
38	8	S.1211	PLUG, V4 GAS			
37	See Chart I	S.1427	PLUG, V2 GAS			
36	2	S.2581	NIPPLE, FF 1/4 GAS			
35	2	S.2579	NIPPLE, MN 1/4 GAS			
34	2	S.1423	DILER V4 GAS			
33	See Chart I	S.6423F	BOSS, INTERMEDIATE SECTION	611-27	CAST IRON	5.8
32	1	S.6431F	DRUM, BALANCING	611-215	CAST IRON	21
31	1	S.6461	KEY, COUPLING 25x14x151	113	C.STEEL	1.41
30	4	S.6451	FAN GUARD, BEARING HOUSING	601-29	C.STEEL	
29	2	S.6427	CAP. OIL RESERVOIR	610-15	ALUMINIUM	
28	2	S.6422	GASKET, BEARING CAP	601-32		
27	2	S.6473	NUT, M20			
26	2	S.6474	WASHER, M20			
25	1	S.6453	FLANGE, RETAINER SUPPDRT	611-28	C.STEEL	11.8
24	2	S.6421	OIL SLINGER	611-13	ALUMINIUM	
23	2	S.6415	SPACER, SHORT	611-18	C.STEEL	1
22	2	S.6416	SPACER, LONG	611-22	C.STEEL	2.0
21	2	S.6465	BEARING BALL 6328 C3 THT			7.5
20	2	S.6428	FAN COOLING	611-20	ALUMINIUM	1.2
19	4	S.6419	CARBON RING	611-17	CARBON	
18	2	S.6421	ADAPTER, CARBON RING	611-14	ALUMINIUM	1.7
17	2	S.6418	RETAINER, CARBON RING	611-16	ALUMINIUM	1.7
16	1	S.6441	CAP. BEARING-OUTLET END	611-08	ALUMINIUM	3.5
15	1	S.6441	CAP. BEARING-INLET END	610-12	ALUMINIUM	3.2
14	1	S.6426	OIL RESERVOIR, OUTLET END	610-11	CAST IRON	5.5
13	1	S.6425	OIL RESERVOIR, INLET END	610-10	CAST IRON	6.6
12	2	S.6454	HOUSING BEARING	611-166	CAST IRON	7.7
11	2	S.6466	NUT, M34		C.STEEL	1.7
10	1	S.6467	WASHER, M34		C.STEEL	1.1
9	1	See Chart I	SHAFT	611-35	C.STEEL	See Chart I
8	Variable	S.6442	SHIM, IMPELLER	016	C.STEEL	
7	1	S.6439	KEY, IMPELLER-DRUM, BALANCING 21x21x11	013	C.STEEL	1.6
6	See Chart I	S.6438	KEY, IMPELLER 21x21x15	013	C.STEEL	1.42
5	See Chart I	S.6413	SPACER, IMPELLER	611-23	C.STEEL	11
4	See Chart I	See Chart I	IMPELLER	See Chart I	ALUMINIUM	See Chart I
3	See Chart I	S.6435	SECTION, INTERMEDIATE	611-19	CAST IRON	7.0
2	1	S.6432	HEAD, OUTLET	611-12	CAST IRON	11.0
1	1	S.6441	HEAD, INLET	611-11	CAST IRON	11.0

Chart I	TYPE	610.01	601.12	611.13	610.04	601.15	611.16
PART NO. ITEM 9	S.6417	S.6408	S.6419	S.6411	S.6411	S.6412	S.6412
WEIGHT kg, ITEM 9	153	216	259	312	365	418	
PART NO. ITEM 43	S.6431	S.6432	S.6433	S.6434	S.6435	S.6436	
PART NO. ITEM 44	S.6443	S.6444	S.6445	S.6446	S.6447	S.6448	
PART NO. ITEM 45	S.6486	S.6487	S.6488	S.6489	S.6491	S.6491	
QTY.	ITEM 3	1	1	2	3	4	5
	ITEM 4	1	2	3	4	5	6
	ITEM 5	1	1	2	3	4	5
	ITEM 6	1	2	3	4	5	6
	ITEM 33	1	1	2	3	4	5
	ITEM 37	3	4	5	6	7	8
	ITEM 55	1	1	2	3	4	5
	ITEM 56	1	7	14	21	28	35
DIMENSION E	681	936	1192	1448	1704	1961	
	106 3/4	146 1/8	187 1/2	231 1/2	275 1/2	319 1/2	
DIMENSION X	381	636	892	1148	1404	1661	
	150 1/8	250 3/8	350 3/8	450 3/8	550 3/8	650 3/8	
DIMENSION L	641	1176	2152	2918	3684	4451	
	252 3/8	463 1/8	851 1/8	1151 1/8	1451 1/8	1751 1/8	
WEIGHT - kg	2487	3332	4177	5122	5867	6712	
WEIGHT - LBS	5481	7344	9216	11068	12931	14793	

CONTINENTAL INDUSTRIE S.A.  
 TYPE 600A  
 INLET END DRIVE  
 SECTIONAL DRAWING  
 CARBON RING SEAL

DATE: 12/11/2014  
 SCALE: 1:1  
 DWG No. 600A-ACWIA  
 REV. 0